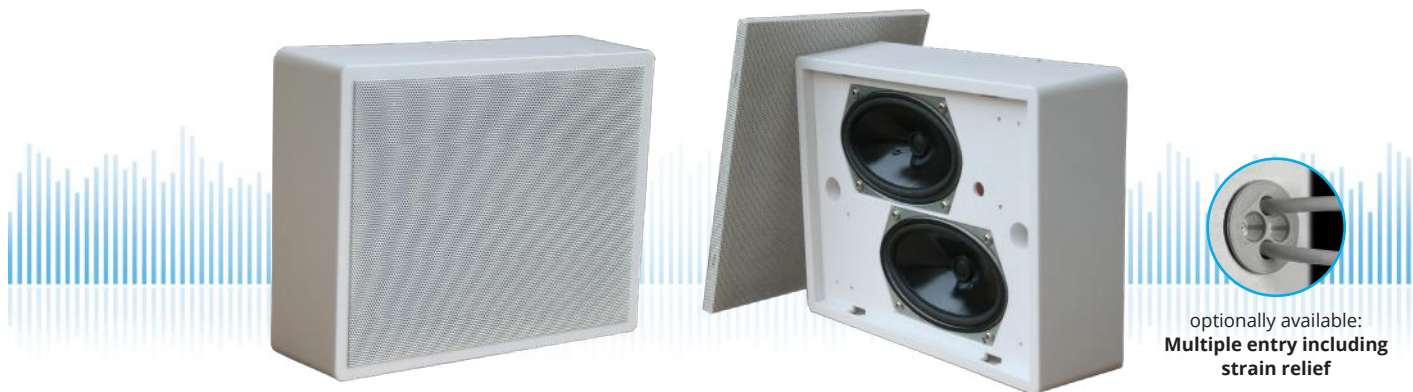
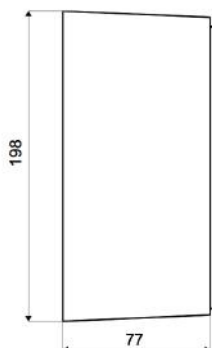
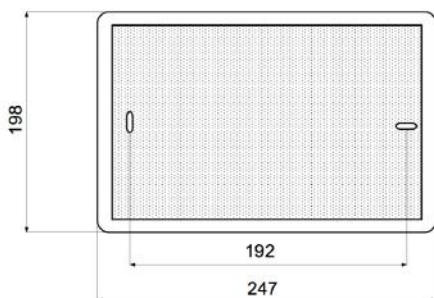


# WLA-230-AB

On-Wall / Ceiling-Speaker  
in ABS with 2x 6 Watt Power for AB - Systems



optionally available:  
**Multiple entry including  
strain relief**



TECHNICAL DATA	WLA-230-AB
Loudspeaker:	2x 120 x 70 mm broadband
Power-Consumption:	2x 100V-6-3-1,5W
Frequency-Range:	80-20 000 Hz
Radiation H/V:	98° / 119° (1 kHz, single)
SPL 1W/1M:	93 dB (double)
SPL 6W/1M:	101 dB (double)
Dimension:	247 x 198 x 77mm
Weight:	1,4 kg
Material:	ABS / Metal-Grill
Color:	white, similar to RAL 9010

- Two autonomous loudspeaker/100V-transformer per system
- Easy mounting through Quick-Snap-Rear-Panel & Safety Screws
- Enables operation of speaker via two discrete cable-lines
- In case of failure of one line, continuous function of the second line
- Custom colors & wet-room-version with ALU-grill obtainable
- Touch-secure 100V-tappings
- Ceramic clamp & thermal fuse by request
- Optional multiple entry including strain relief available