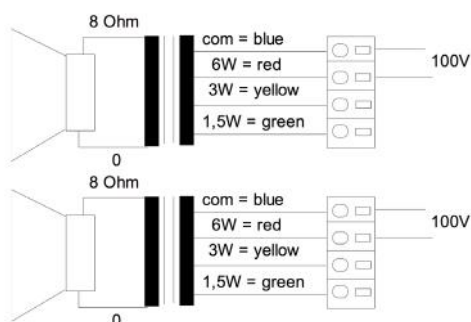
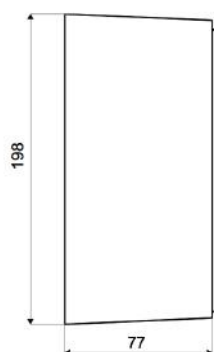
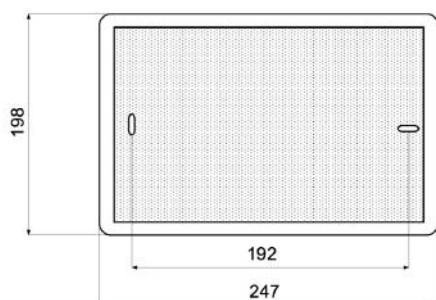
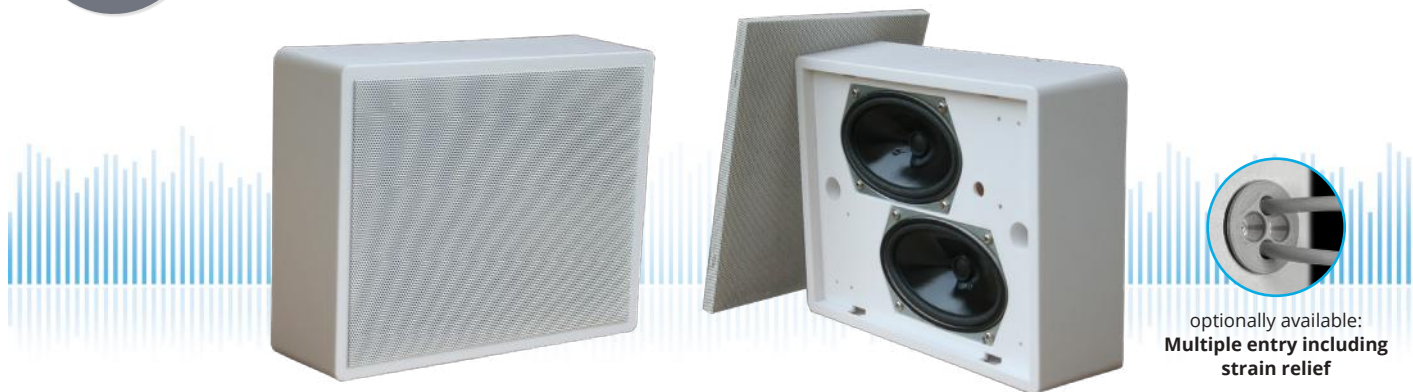


WLA-230-AB/EN5424

EN 54-24 On-Wall / Ceiling-Speaker
in ABS with 2x 6 Watt Power for AB - Systems

EN
54-24



TECHNICAL DATA

WLA-230-AB/EN5424

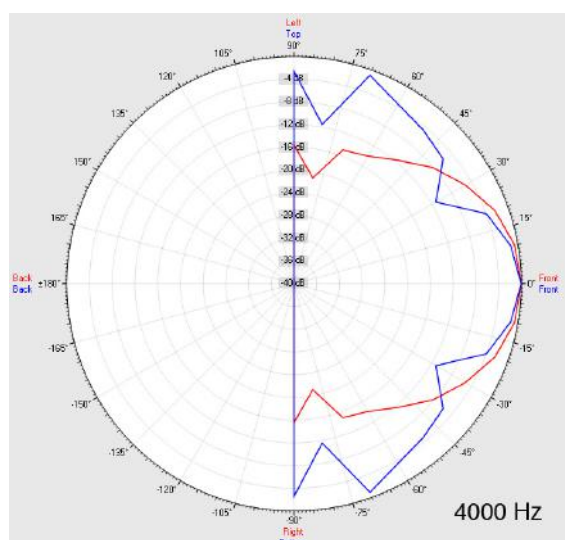
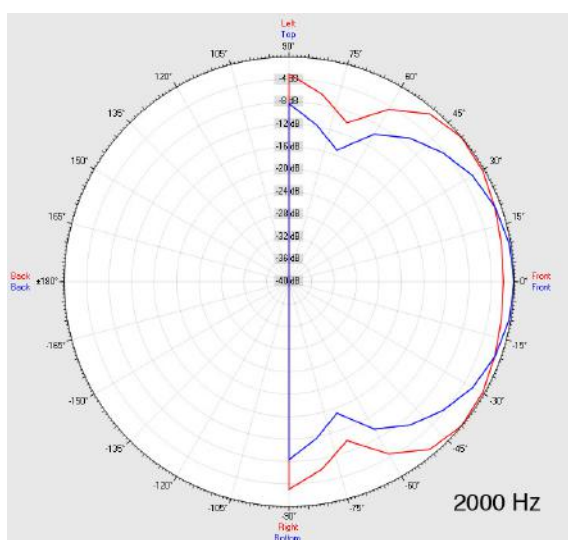
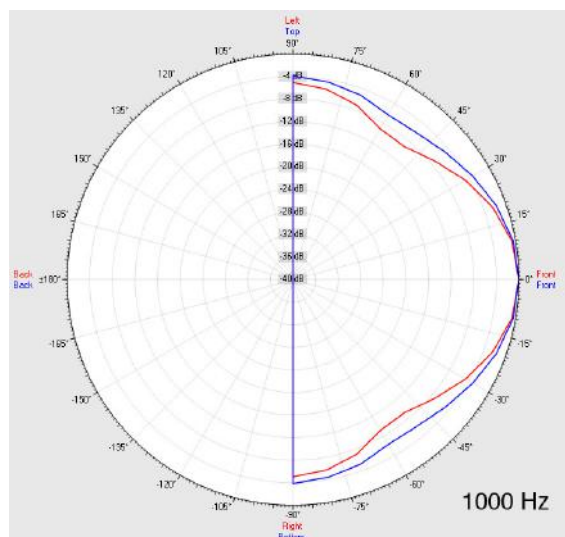
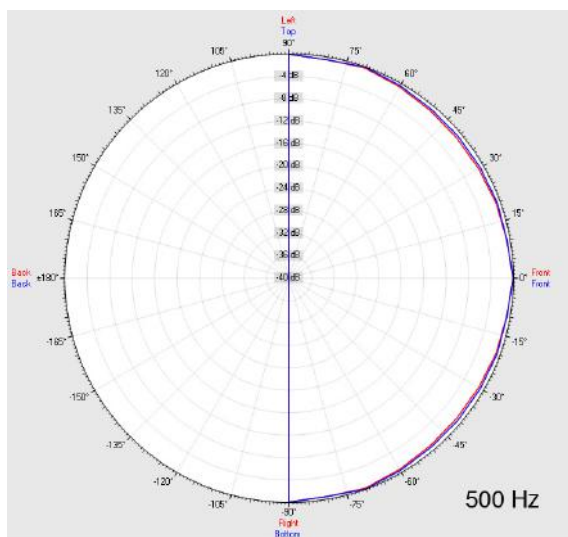
Loudspeaker:	2x 120x70mm broadband
Power-Consumption:	2x 100V-6-3-1,5W
Frequency-Range:	80-20 000 Hz
EN-Sensitivity 1W/4M:	74,5 dB (1x), 80,5 dB (2x)
SPL max 6W/4M:	82,14 dB (1x), 88,14 dB (2x)
SPL 1W/1M max. EASE/Ulysses:	96 dB (2,5 kHz) (double)
SPL 6W/1M max. EASE/Ulysses:	103 dB (2,5 kHz) (double)
Radiation H (0,5/1/2/4KHz):	130°/98°/95°/65° (single)
Radiation V (0,5/1/2/4KHz):	130°/119°/105°/70° (single)
Dimension:	247 x 198 x 77mm
Weight:	1,4 kg
Material:	ABS / Metal-Grill
Color:	white
Certificate-Nr.:	1293-CPD-0230
Order-Nr.:	WLA-230-AB/EN5424-WH

- Two autonomous loudspeaker/100V-transformer per system
- Easy mounting through Quick-Snap-Rear-Panel & Safety Screws
- Enables operation of speaker via two discrete cable-lines
- In case of failure of one line, continuous function of the second line
- Custom colors & wet-room-version with ALU-grill obtainable
- Three touch-secure 100V-tappings
- Ceramic clamp & thermal fuse by request
- Optional multiple entry including strain relief available

WLA-230-AB/EN5424

EN 54-24 On-Wall / Ceiling-Speaker
in ABS with 2x 6 Watt Power for AB - Systems

Radiation



Test method	Axis	500 Hz	1000 Hz	2000 Hz	4000 Hz
EN 54-24	HOR	130°	98°	95°	65°
EN 54-24	VER	130°	119°	105°	70°
EASE/Ulysses	HOR	180°	70°	125°	70°
EASE/Ulysses	VER	180°	180°	90°	40°

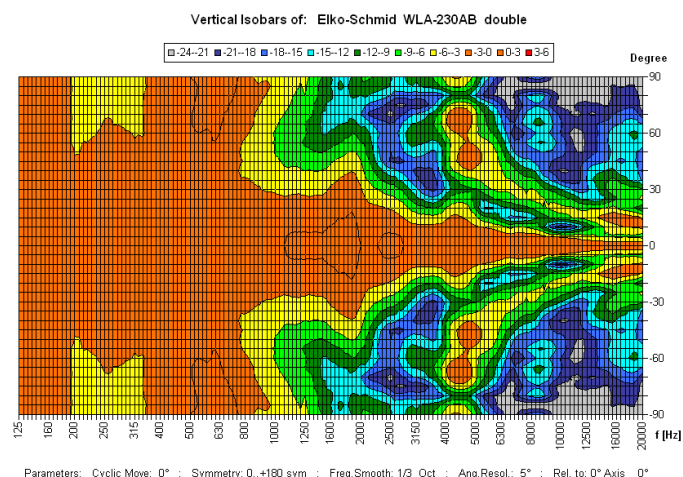
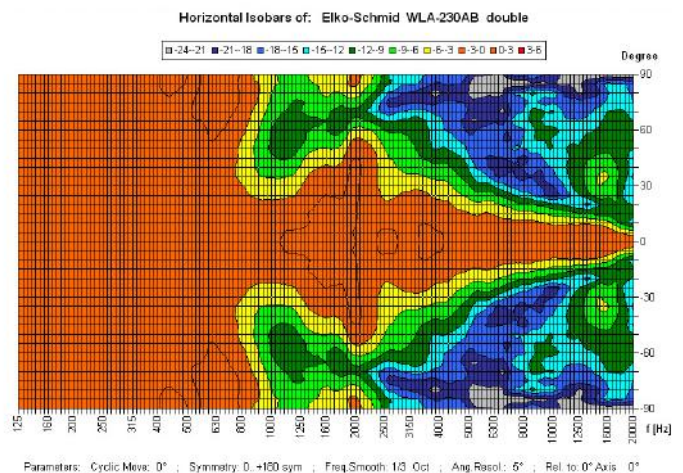
WLA-230-AB/EN5424

EN 54-24 On-Wall / Ceiling-Speaker
in ABS with 2x 6 Watt Power for AB - Systems



Elektroakustische Komponenten

Isobar-Diagramm



CE

1293

Elko Schmid GmbH & Co. KG
Glauchauer Str. 30, D-08058 Zwickau

11

DoP: 498058129314-OWS-PN-0014

EN 54-24

Loudspeaker for voice alarm systems for
fire detection and fire alarm systems for buildings

WLA-230-AB/EN5424

Intended Option:
Type A