

AB & DUAL-CONE SPEAKER

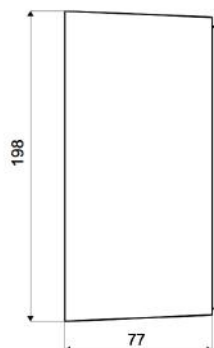
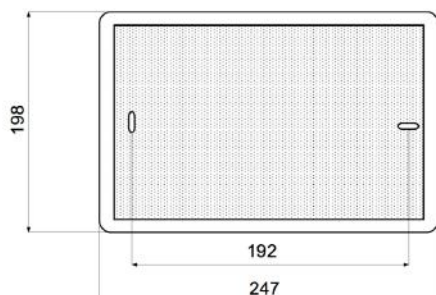
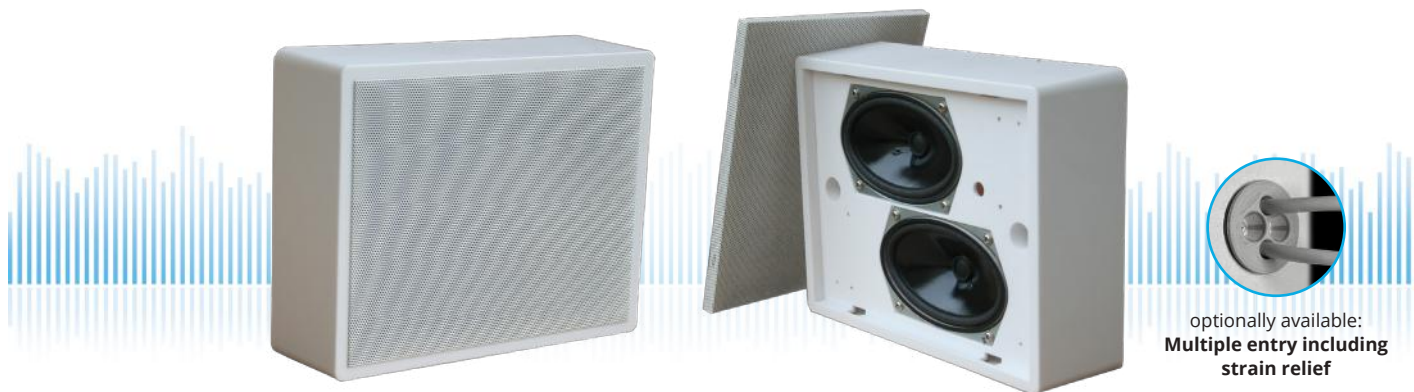
WLA-230-AB-10W

On-Wall / Ceiling-Speaker

in ABS with 2x 10 Watt Power for AB - Systems

**ELKO
SCHMID** 

Elektroakustische Komponenten

**TECHNICAL DATA****WLA-230-AB-10W**

Loudspeaker:	2x 120 x 70 mm broadband
Power-Consumption:	2x 100V-10-6-3-1,5W
Frequency-Range:	80-20 000 Hz
SPL 1W/1M:	93 dB (double)
SPL 10W/1M:	103 dB (double)
Radiation:	180° (1 kHz)
Dimension:	247 x 198 x 77mm
Weight:	1,6 kg
Material:	ABS / Metal-Grill
Color:	white, similar to RAL 9010

- Two autonomous loudspeaker/100V-transformer per system
- Easy mounting through Quick-Snap-Rear-Panel & Safety Screws
- Enables operation of speaker via two discrete cable-lines
- In case of failure of one line, continuous function of the second line
- Custom colors & wet-room-version with ALU-grill obtainable
- Touch-secure 100V-tappings
- Ceramic clamp & thermal fuse by request
- Optional multiple entry including strain relief available