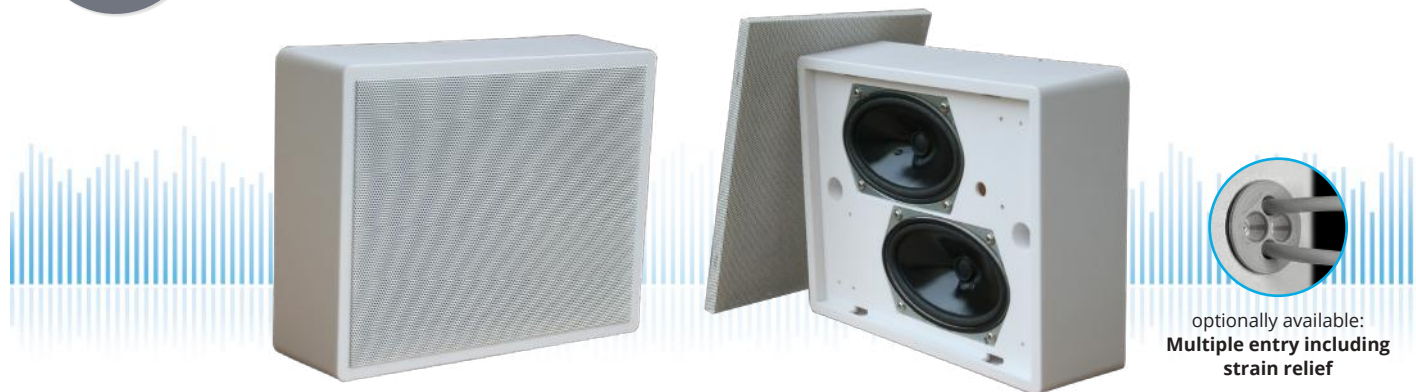


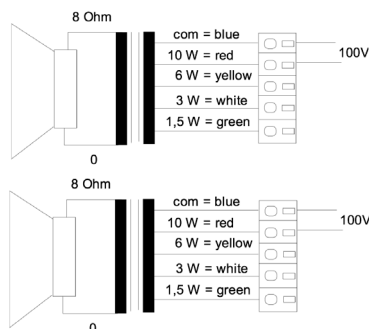
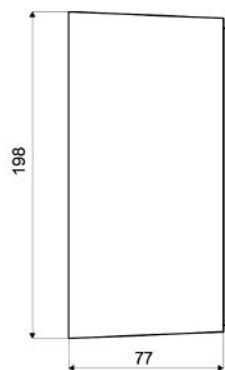
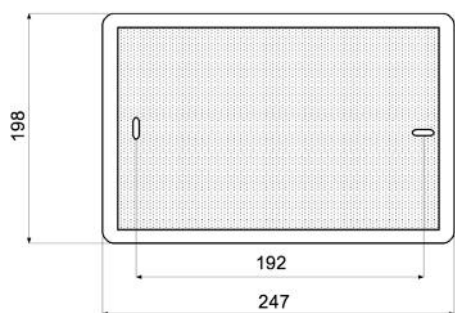
WLA-230AB-10W/EN5424

EN 54-24 On-Wall / Ceiling-Speaker
in ABS with 2x 10 Watt Power for AB - Systems

EN
54-24



optionally available:
**Multiple entry including
strain relief**



TECHNICAL DATA

WLA-230AB-10W/EN5424

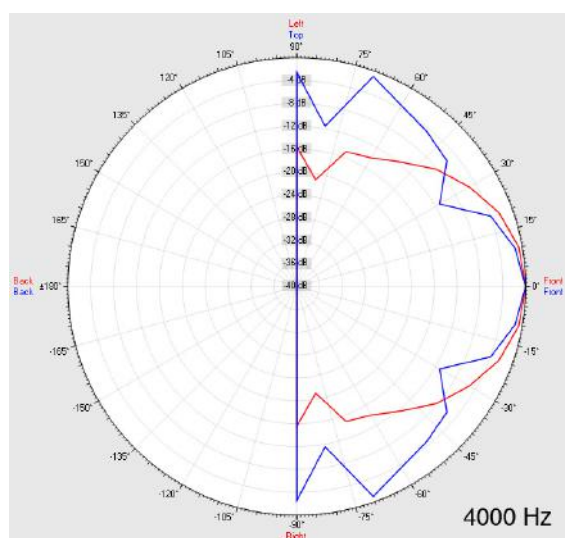
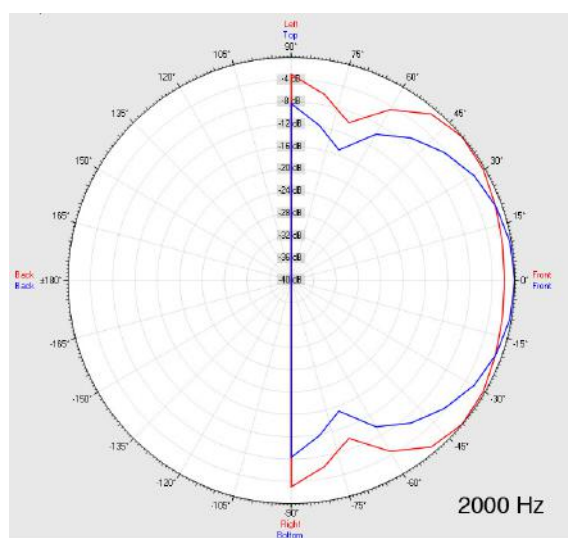
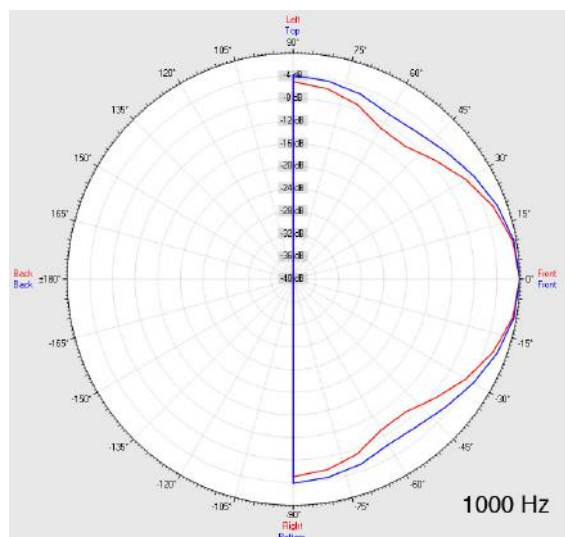
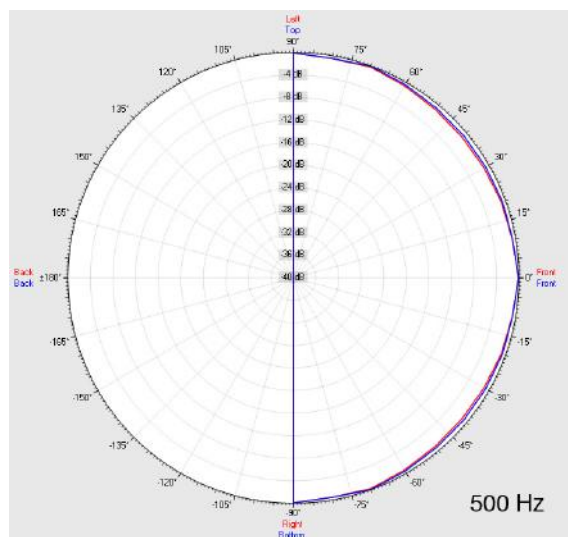
Loudspeaker:	2x 120x70mm broadband
Power-Consumption:	2x 100V-10-6-3-1,5W
Frequency-Range:	80-20 000 Hz
EN-Sensitivity 1W/4M:	71 dB (1x), 77 dB (2x)
SPL max 10W/4M:	80 dB (1x), 86 dB (2x)
SPL 1W/1M max. EASE/Ulysses:	95,5 dB (1,3 kHz) (double)
SPL 10W/1M max. EASE/Ulysses:	104,5 dB (1,3 kHz) (double)
Radiation H (0,5/1/2/4KHz):	180°/180°/111°/88° (single)
Radiation V (0,5/1/2/4KHz):	180°/180°/180°/139° (single)
Dimension:	247 x 198 x 77mm
Weight:	1,5 kg
Material:	ABS / Metal-Grill
Color:	white
Certificate-Nr.:	1293-CPR-0414
Order-Nr.:	WLA-230AB-10W/EN5424

- Two autonomous loudspeaker/100V-transformer per system
- Easy mounting through Quick-Snap-Rear-Panel & Safety Screws
- Enables operation of speaker via two discrete cable-lines
- In case of failure of one line, continuous function of the second line
- Custom colors & wet-room-version with ALU-grill obtainable
- Flame retardent material acc. to EN 60695-11-20, 5VB
- Four touch-secure 100V-tappings
- Ceramic clamp & thermal fuse by request
- Optional multiple entry including strain relief available

WLA-230AB-10W/EN5424

EN 54-24 On-Wall / Ceiling-Speaker
in ABS with 2x 10 Watt Power for AB - Systems

Radiation



Test method	Axis	500 Hz	1000 Hz	2000 Hz	4000 Hz
EN 54-24	HOR	180°	180°	111°	88°
EN 54-24	VER	180°	180°	180°	139°
EASE/Ulysses	HOR	180°	70°	125°	70°
EASE/Ulysses	VER	180°	180°	90°	40°

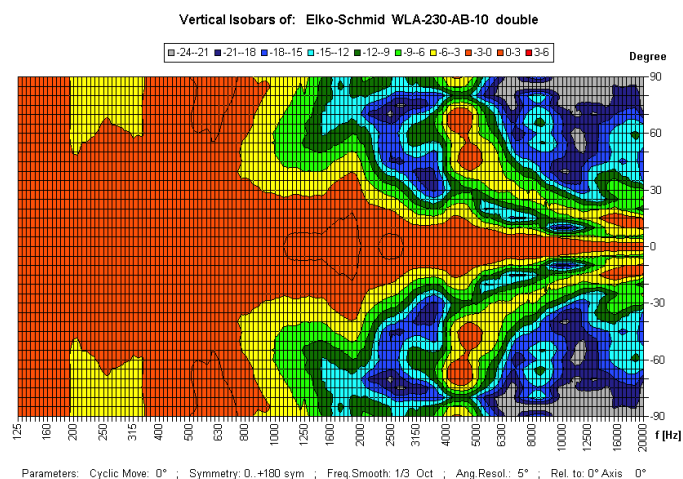
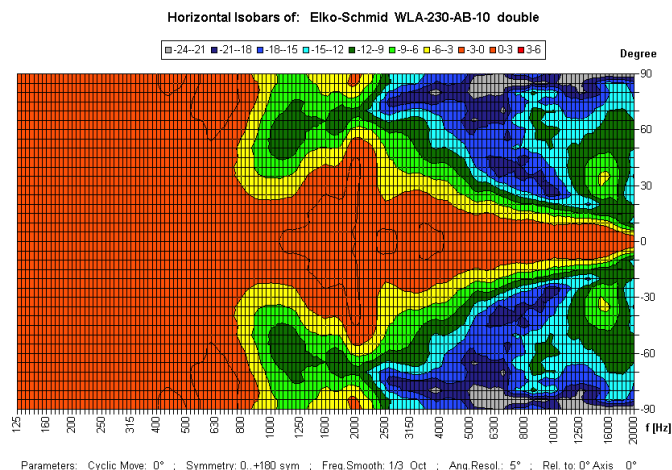
WLA-230AB-10W/EN5424

EN 54-24 On-Wall / Ceiling-Speaker
in ABS with 2x 10 Watt Power for AB - Systems



Elektroakustische Komponenten

Isobar-Diagramm



CE

1293

Elko Schmid GmbH & Co. KG
Glauchauer Str. 30, D-08058 Zwickau

14

DoP: 498058129314-OWS-PN-0014

EN 54-24

Loudspeaker for voice alarm systems for
fire detection and fire alarm systems for buildings

WLA-230AB-10W/EN5424

Intended Option:
Type A