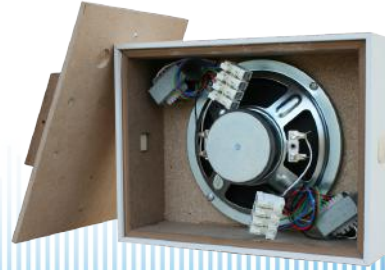
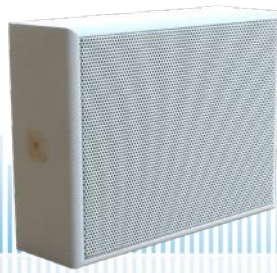


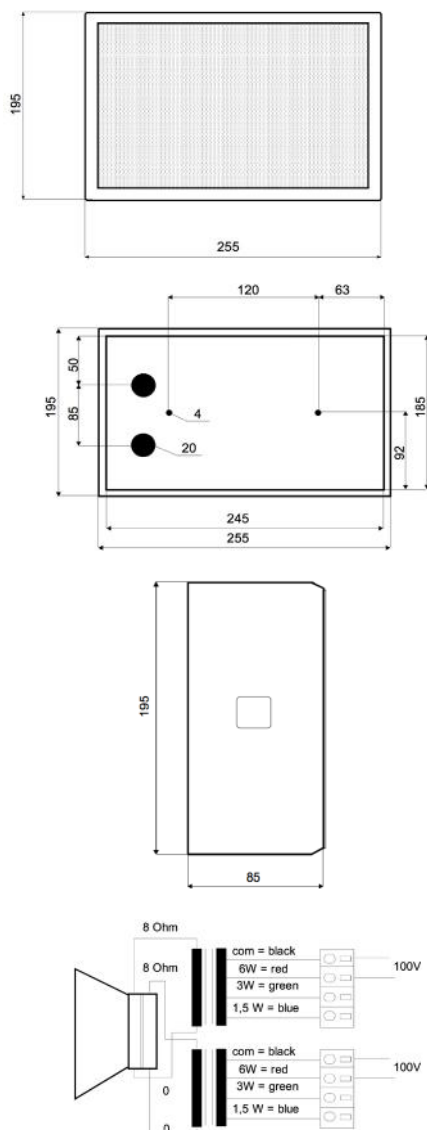
WHL-250-DC/EN5424

EN 54-24 On-Wall / Ceiling-Speaker
in MDF with 2x 6 Watt Power and AB-Dual-Cone-Technique

EN
54-24



optionally available:
**Multiple entry including
strain relief**



TECHNICAL DATA

WHL-250-DC/EN5424

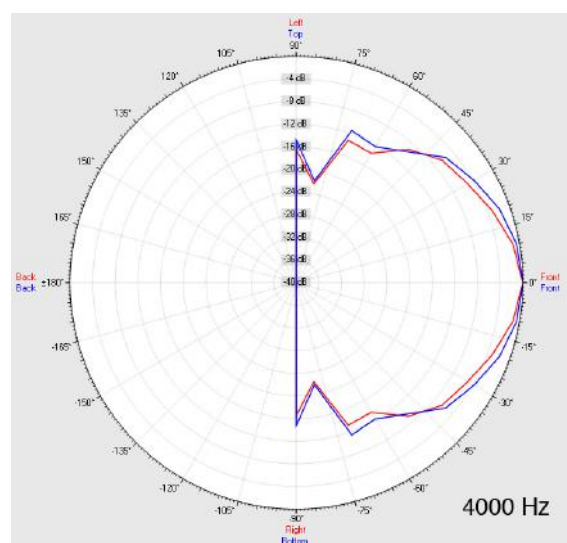
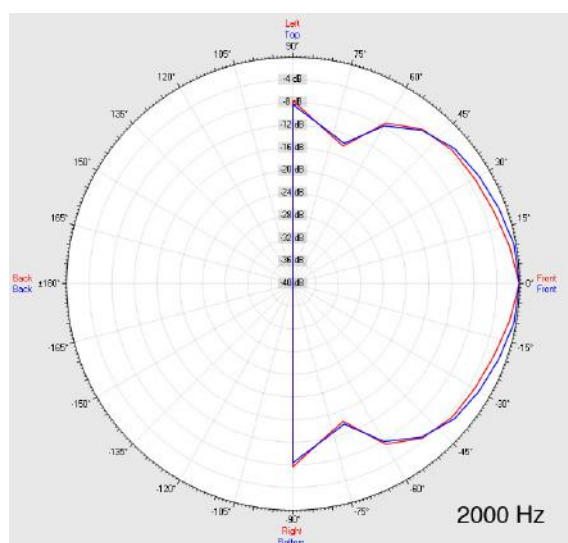
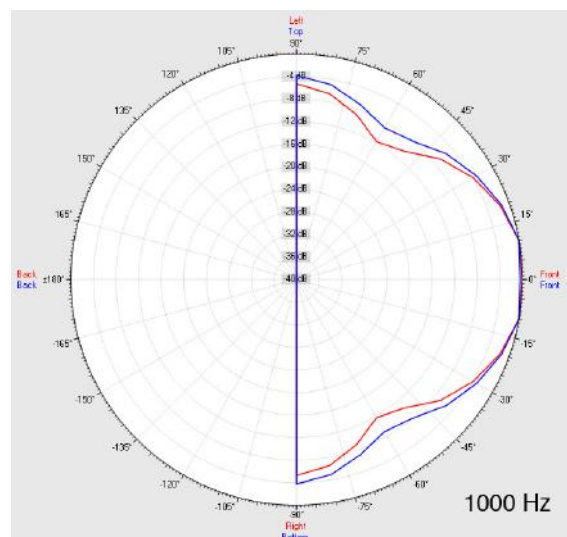
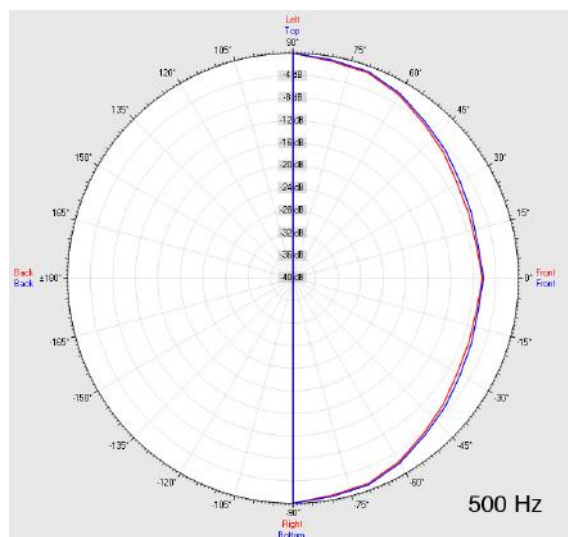
Loudspeaker:	6,5" with Dual Voice Coil
Power-Consumption:	2x 100V-6-3-1,5W
Frequency-Range:	70-18 000 Hz
EN-Sensitivity 1W/4M:	75 dB (1x), 81 dB (2x)
SPL max 6W/4M:	83 dB (1x), 89 dB (2x)
SPL 1W/1M max. EASE/Ulysses:	101 dB (1,2 kHz) (double)
SPL 6W/1M max. EASE/Ulysses:	108,5 dB (1,2 kHz) (double)
Radiation H (0,5/1/2/4KHz):	180°/90°/119°/67° (single)
Radiation V (0,5/1/2/4KHz):	180°/180°/107°/71° (single)
Dimension:	255 x 195 x 85 mm
Weight:	2,2 kg
Material:	MDF / Metal-Grill
Color:	white
Certificate-Nr.:	1293-CPR-0417
Order-Nr.:	WHL-250-DC/EN5424

- Two autonomous loudspeaker/100V-transformer per system
 - Enable operation of speaker via two discrete cable-lines
 - In case of breakdown of one line, continuous function of the second
 - In case of overheating of one coil, continuous function of the second
 - No bisection of the membrane surface
 - Ceramic clamp & thermal fuse by request
 - Optional multiple entry including strain relief available
- Always check full functionality of the line monitoring before using our dual voice coil products.

WHL-250-DC/EN5424

EN 54-24 On-Wall / Ceiling-Speaker
in MDF with 2x 6 Watt Power and AB-Dual-Cone-Technique

Radiation

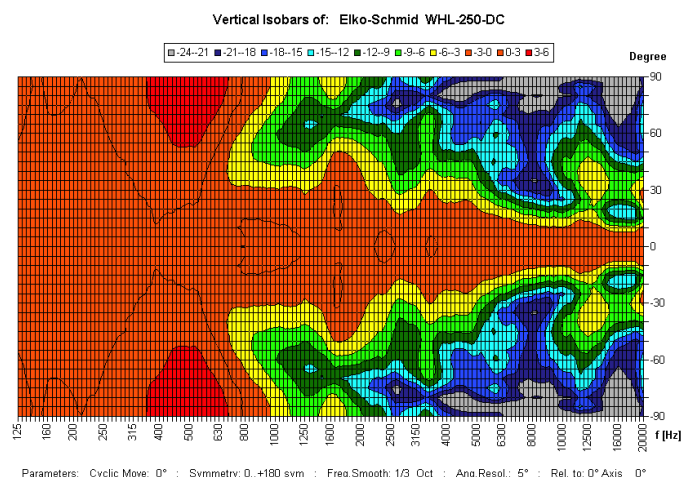
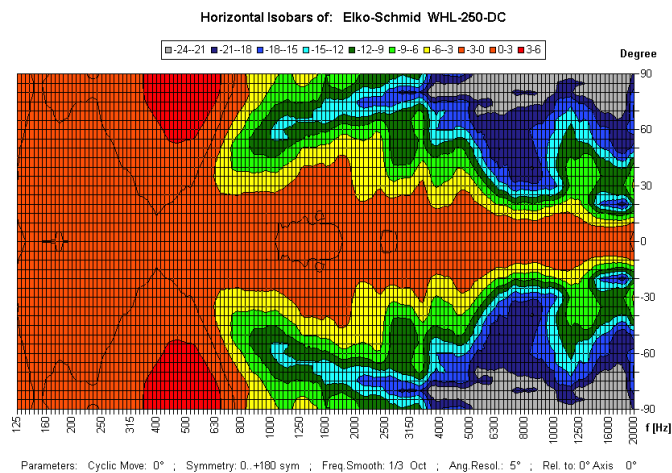


Test method	Axis	500 Hz	1000 Hz	2000 Hz	4000 Hz
EN 54-24	HOR	180°	90°	119°	67°
EN 54-24	VER	180°	180°	107°	71°
EASE/Ulysses	HOR	180°	75°	110°	60°
EASE/Ulysses	VER	180°	85°	110°	75°

WHL-250-DC/EN5424

EN 54-24 On-Wall / Ceiling-Speaker
in MDF with 2x 6 Watt Power and AB-Dual-Cone-Technique

Isobar-Diagramm




1293

Elko Schmid GmbH & Co. KG
Glauchauer Str. 30, D-08058 Zwickau

14

DoP: 498058129314-OWS-PN-0025

EN 54-24

Loudspeaker for voice alarm systems for
fire detection and fire alarm systems for buildings

WHL-250-DC/EN5424

Intended Option:
Type A