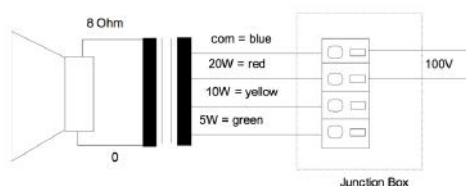
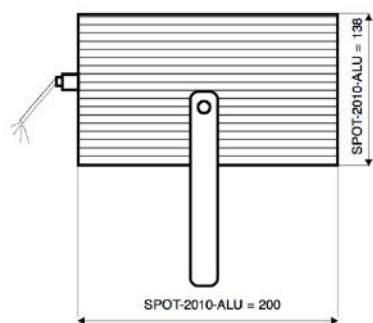
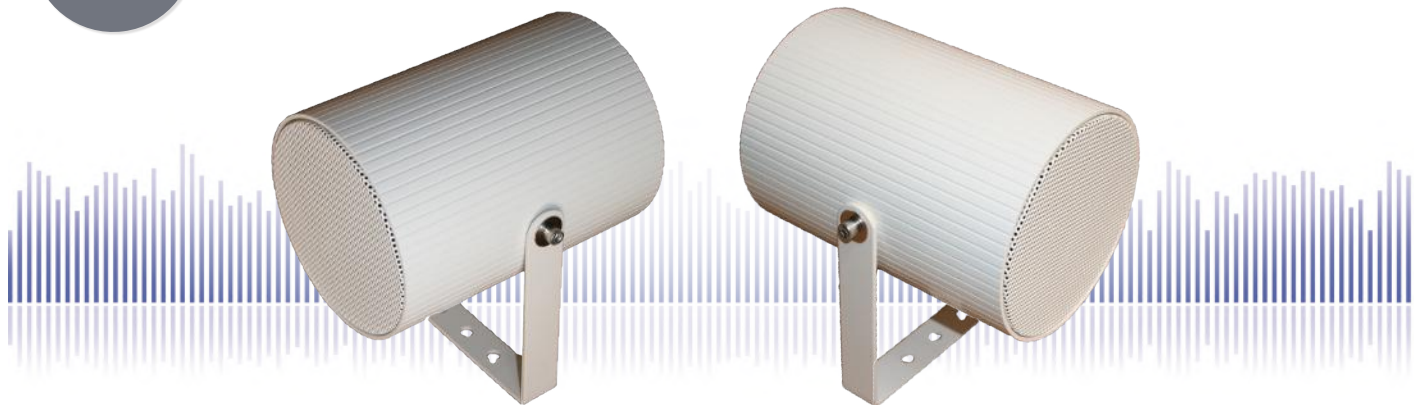


SPOT-2010-ALU/EN5424

EN 54-24 Projector-Speaker for Outdoor Use
in Aluminium with 20 Watt Power

EN
54-24



TECHNICAL DATA

SPOT-2010-ALU/EN5424

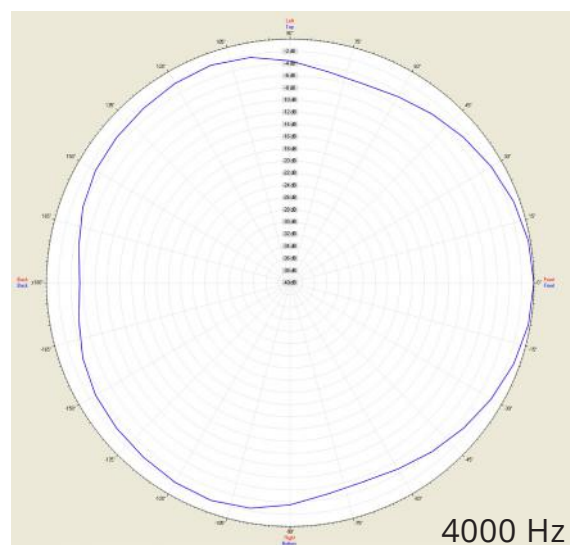
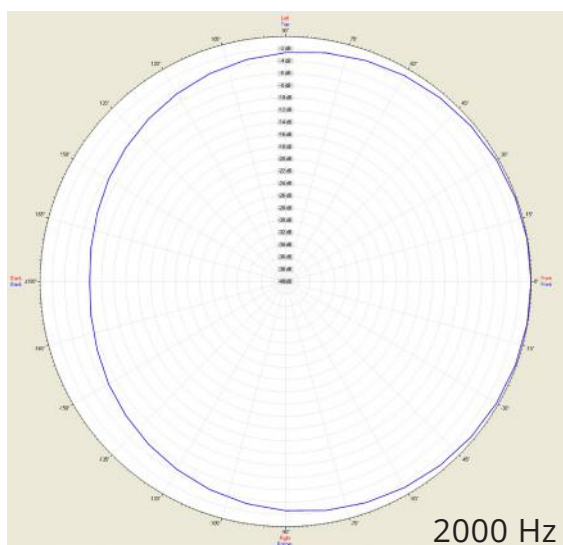
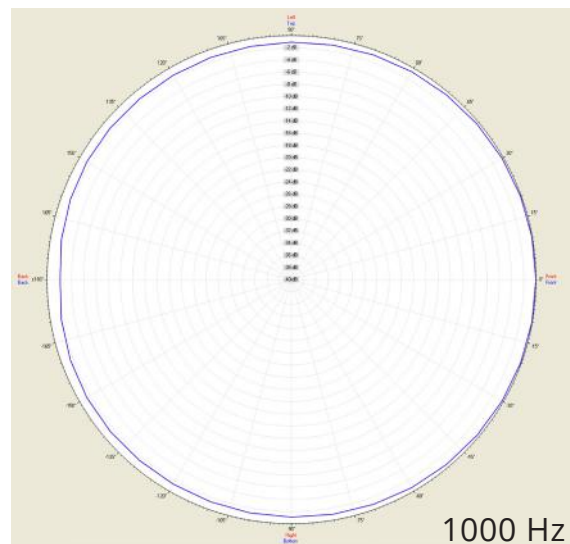
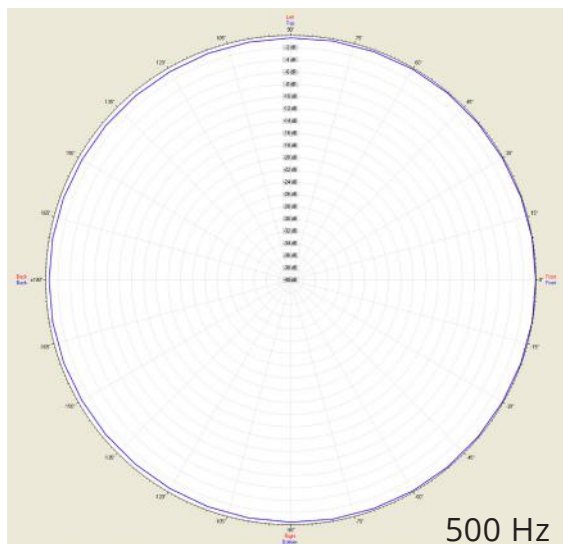
Loudspeaker:	130mm - broadband
Power-Consumption:	100V-20-10-5W
Frequency-Range:	110-17 000 Hz
EN-Sensitivity 1W/4M:	76 dB
SPL max 20W/4M:	90 dB
SPL 1W/1M max. EASE/Ulysses:	101 dB (3,7 kHz)
SPL 20W/1M max. EASE/Ulysses:	112 dB (3,7 kHz)
Radiation H (0,5/1/2/4KHz):	360°/360°/118°/82°
Radiation V (0,5/1/2/4KHz):	360°/360°/118°/82°
EN degree:	EN Type B, weather-proof, outdoor certificated
Dimension:	138 x 200 mm
Weight:	2,2 kg
Material:	ALU
Color:	white
Certificate-Nr.:	1293-CPR-0585
Order-Nr.:	SPOT-2010-ALU/EN5424

- Directivity for Speech-application
- Splash-water-protected ALU-case
- Alu-bracket, Alu-bracket & V2A/SS304 screws
- Three touch-secure 100V-tappings via cable & junction box
- Special DIN 912-ISO 4762 screws
- Optional ceramic-clamp & thermal fuse by request

SPOT-2010-ALU/EN5424

EN 54-24 Projector-Speaker for Outdoor Use
in Aluminium with 20 Watt Power

Radiation

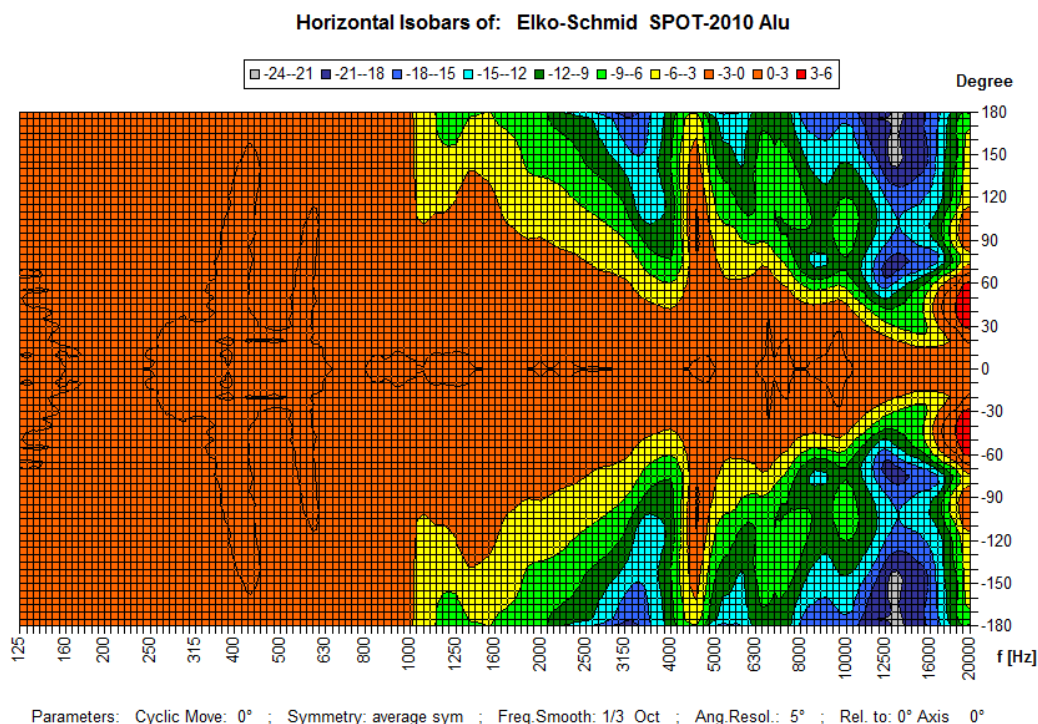


Test method	Axis	500 Hz	1000 Hz	2000 Hz	4000 Hz
EN 54-24	HOR	360°	360°	118°	82°
EN 54-24	VER	360°	360°	118°	82°
EASE/Ulysses	HOR	360°	360°	270°	120°
EASE/Ulysses	VER	360°	360°	270°	120°

SPOT-2010-ALU/EN5424

EN 54-24 Projector-Speaker for Outdoor Use
in Aluminium with 20 Watt Power

Isobar-diagram

**CE**

1293

Elko Schmid GmbH & Co. KG
Glauchauer Str. 30, D-08058 Zwickau

18

DoP: 498058129314-OWS-PN-0022

EN 54-24

Loudspeaker for voice alarm systems for
fire detection and fire alarm systems for buildings

SPOT-2010-ALU/EN5424

Intended Option:
Type B