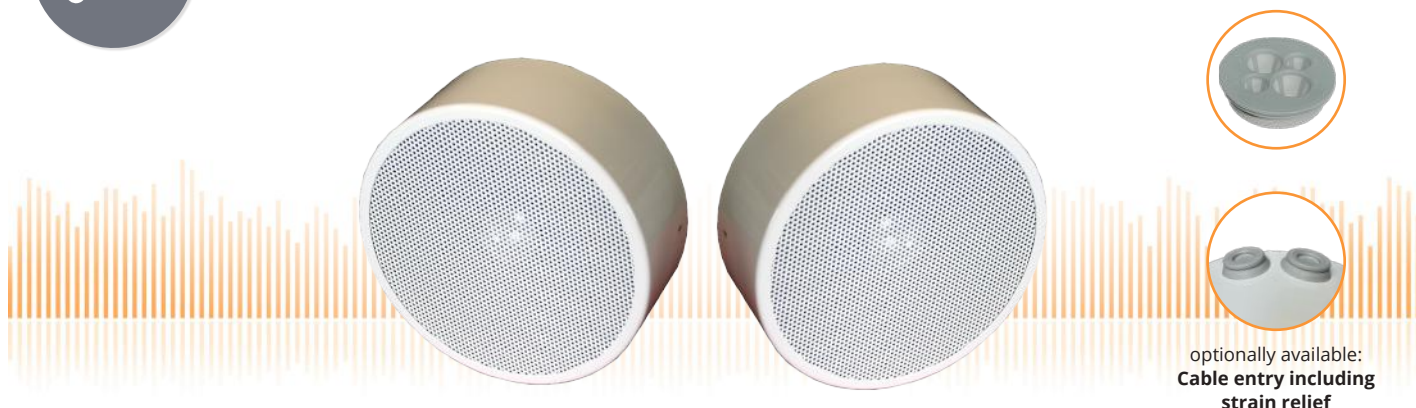


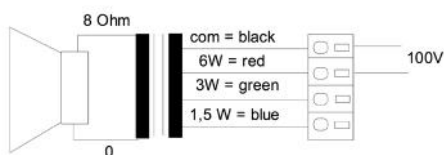
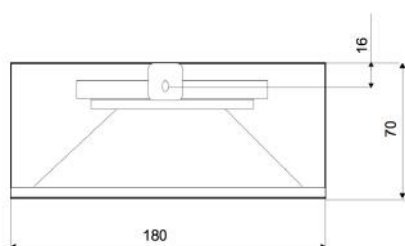
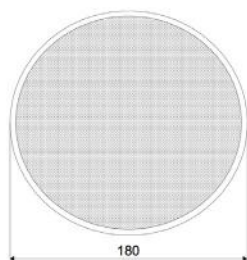
# RG-180F/EN5424

EN 54-24 Wall / On-Ceiling - Speaker  
in Metal with 6 Watt Power

EN  
54-24



optionally available:  
**Cable entry including  
strain relief**



## TECHNICAL DATA

## RG-180F/EN5424

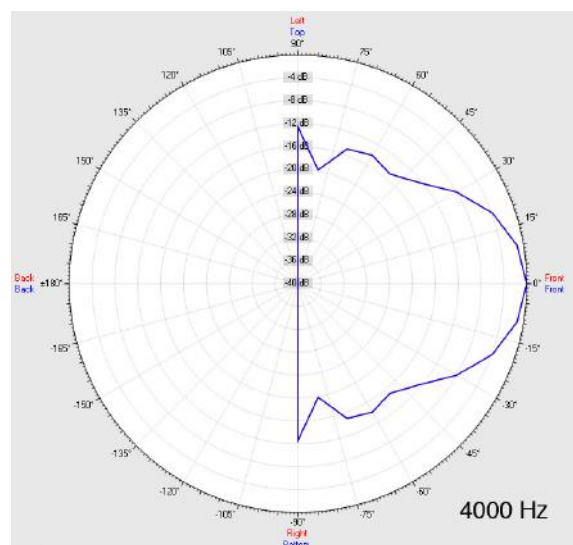
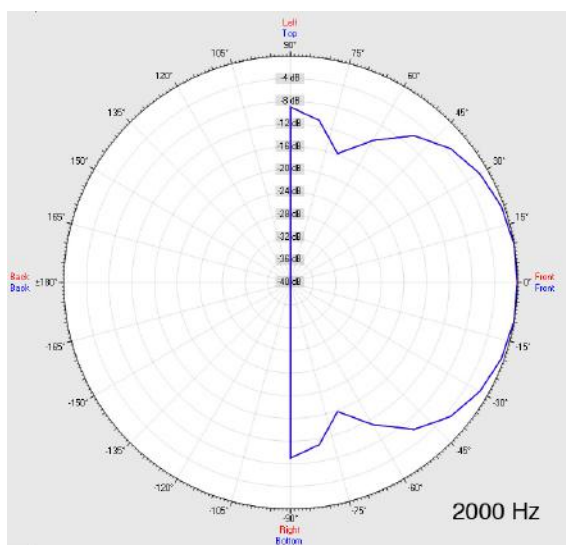
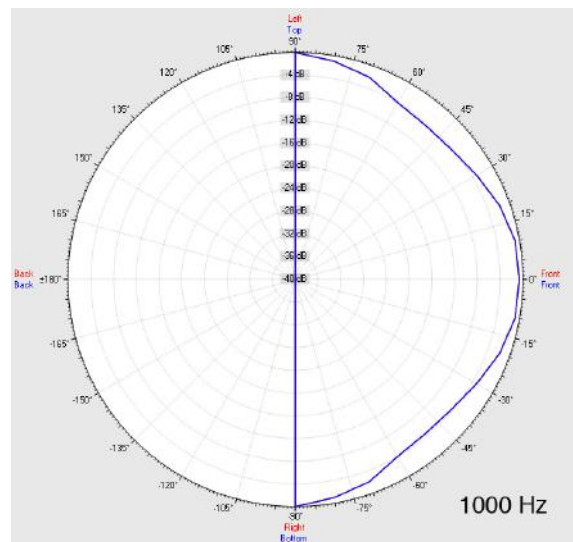
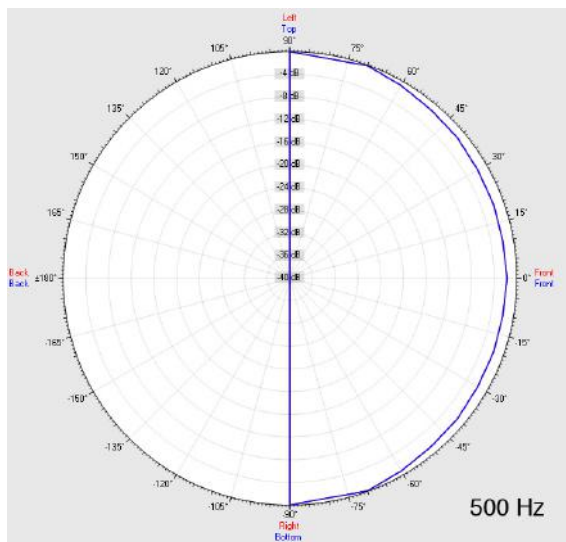
Loudspeaker:	6,5" - broadband with HF-cone
Power-Consumption:	100V-6-3-1.5W
Frequency-Range:	100-16 000 Hz
EN-Sensitivity 1W/4M:	81 dB
SPL max 6W/4M:	89,5 dB
SPL 1W/1M max. EASE/Ulysses:	103 dB (1,5/3,5 kHz)
SPL 6W/1M max. EASE/Ulysses:	109 dB (1,5/3,5 kHz)
Radiation H (0,5/1/2/4kHz):	115°/115°/94°/33°
Radiation V (0,5/1/2/4kHz):	115°/115°/94°/33°
Dimension:	180 x 70 mm
Weight:	1 kg
Material:	Metal
Color:	RAL 9010 / opt. RAL Classic
Certificate-Nr.:	1293-CPR-0630
Order-Nr.:	RG-180F/EN5424

- Ball-attack certified version acc. to DIN 18032-3 optional
- Theft-protected mounting bracket and screws
- Custom colors optional
- Wetroom-version with ALU-grill and impregnation obtainable
- Three touch-secure 100V-tappings
- Ceramic clamp & thermal fuse by request
- Optional cable entry including strain relief available
- Optional multiple entry can be used if necessary

# RG-180F/EN5424

EN 54-24 Wall / On-Ceiling - Speaker  
in Metal with 6 Watt Power

## Radiation



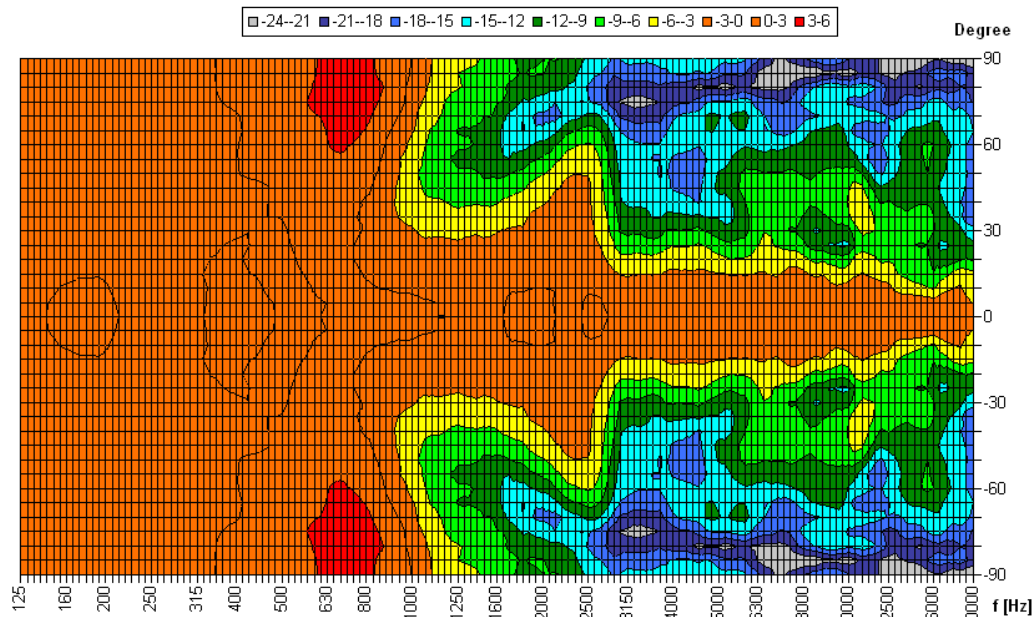
Test method	Axis	500 Hz	1000 Hz	2000 Hz	4000 Hz
EN 54-24	HOR	115°	115°	94°	33°
EN 54-24	VER	115°	115°	94°	33°
EASE/Ulysses	HOR	180°	180°	100°	50°
EASE/Ulysses	VER	180°	180°	100°	50°

# RG-180F/EN5424

EN 54-24 Wall / On-Ceiling - Speaker  
in Metal with 6 Watt Power

## Isobar-Diagramm

Horizontal Isobars of: Elko-Schmid RG180 Grenzfläche



Parameters: Cyclic Move: 0° ; Symmetry: 0..+180 sym ; Freq.Smooth: 1/3 Oct ; Ang.Resol.: 5° ; Rel. to: 0° Axis 0°

**CE**

1293

Elko Schmid GmbH & Co. KG  
Glauchauer Str. 30, D-08058 Zwickau

11

DoP: 498058129314-OWS-PN-0009

EN 54-24

Loudspeaker for voice alarm systems for  
fire detection and fire alarm systems for buildings

RG-180F/EN5424

Intended Option:  
Type A