

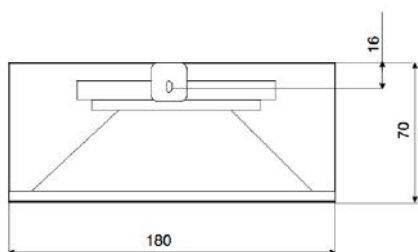
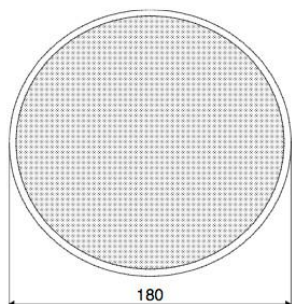
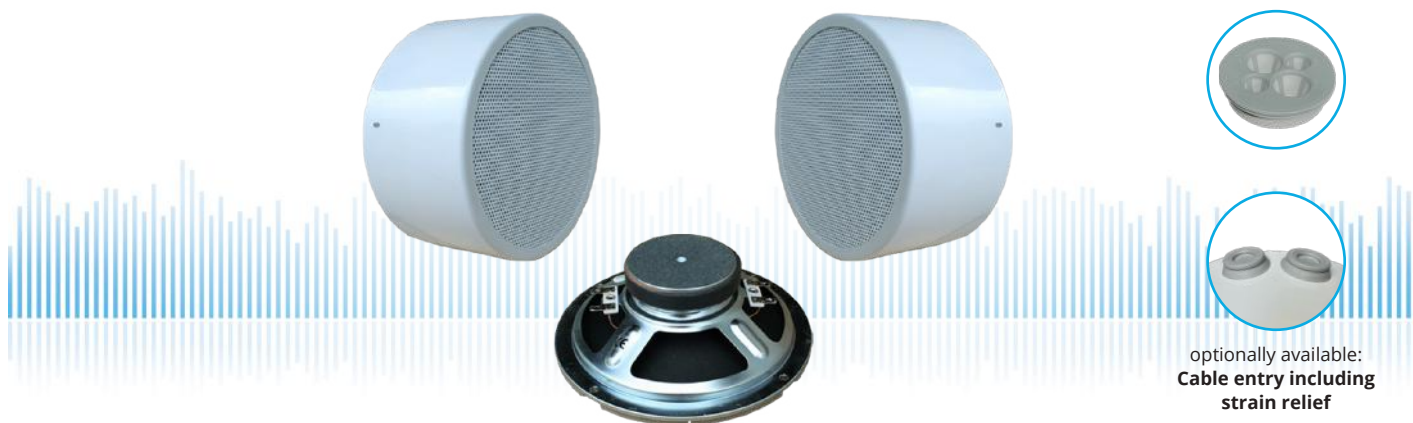
RG-180-DC

On-Wall / Ceiling-Speaker

in Metal with 2x 6 Watt Power and AB-Dual-Cone-Technique

**ELKO
SCHMID** 

Elektroakustische Komponenten

**TECHNICAL DATA****RG-180-DC**

Loudspeaker:	6,5" - broadband with Dual Voice Coil
Power-Consumption:	2x 100V-6-3-1,5W
Frequency-Range:	80-16 000 Hz
SPL 1W/1M:	95 dB (double)
SPL 6W/1M:	103 dB (double)
Radiation:	180° (1 kHz)
Dimension:	180 x 70mm
Dimension:	1,4 kg
Material:	Metal
Color:	RAL 9010 / opt. RAL Classic

- Two autonomous loudspeaker/100V-transformer per system
 - Enable operation of speaker via two discrete cable-lines
 - In case of breakdown of one line, continuous function of the second
 - In case of overheating of one coil, continuous function of the second
 - No bisection of the membrane surface
 - Custom colors, wet-room and Ball-attack protection according DIN 18032-3 optional
 - Ceramic clamp & thermal fuse by request
 - Optional cable entry including strain relief available
 - Optional multiple entry can be used if necessary
- Always check full functionality of the line monitoring before using our dual voice coil products.