

DLS-265FT/30W-Esonic-808/EN5424

EN 54-24 Ceiling-Speaker
 in Metal with 30 Watt Power and 2-Way - Technology

EN
54-24

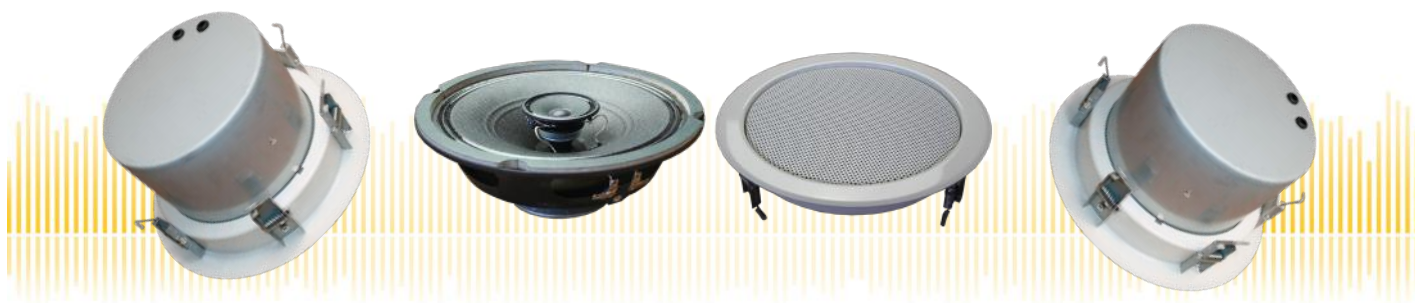
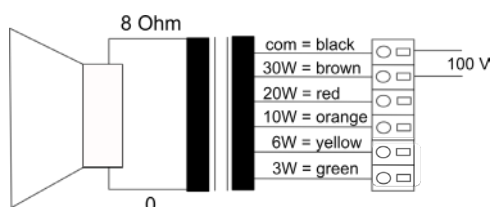
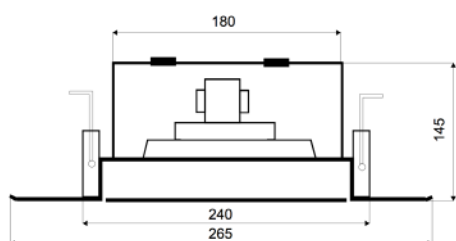


Abbildung ähnlich



TECHNICAL DATA

DLS-265FT/30W-Esonic-808/EN5424

Loudspeaker:	8" - Coaxial-Speaker
Power-Consumption:	100V-30-20-10-6-3W
Frequency-Range:	50-20 000 Hz
EN-Sensitivity 1W/4M:	82 dB
SPL max 30W/4M:	95,13 dB
SPL 1W/1M max. EASE/Ulysses:	104 dB (1,3 kHz)
SPL 30W/1M max. EASE/Ulysses:	118 dB (1,3 kHz)
Radiation H (0,5/1/2/4KHz):	180°/180°/83°/38°
Radiation V (0,5/1/2/4KHz):	180°/180°/83°/38°
Dimension:	265 mm x 145 mm with firedome
Ceiling Cut-out:	240 mm
Suitable slab thickness:	1 mm - 35 mm
Weight:	3,25 kg
Material:	Metal, 6 springs
Color:	RAL 9010 / opt. RAL Classic
Certificate-Nr.:	1293-CPD-0301
Order-Nr.:	DLS-265FT/30W-Esonic-808/EN5424

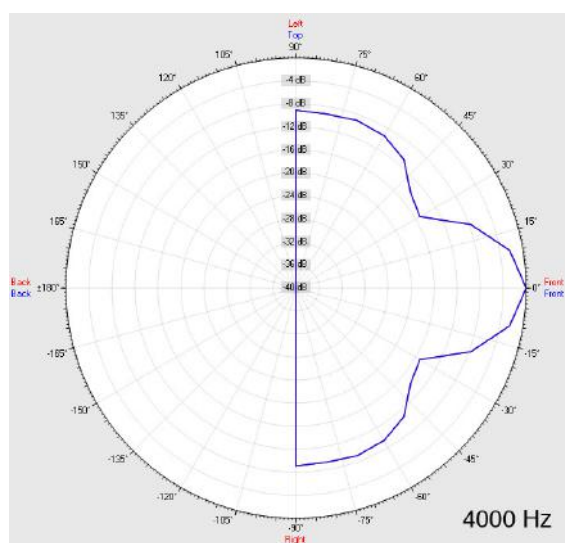
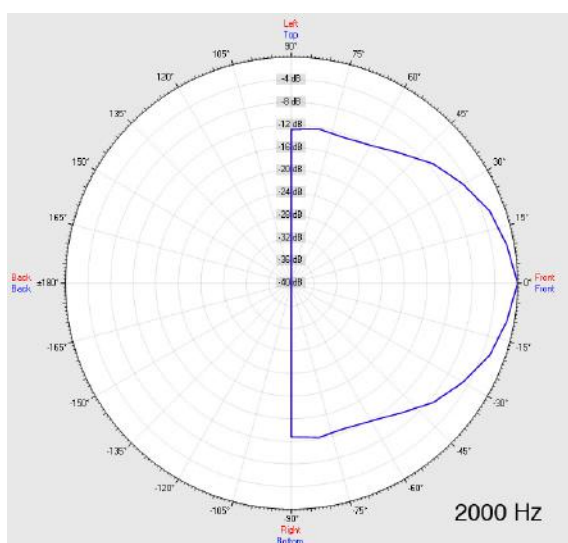
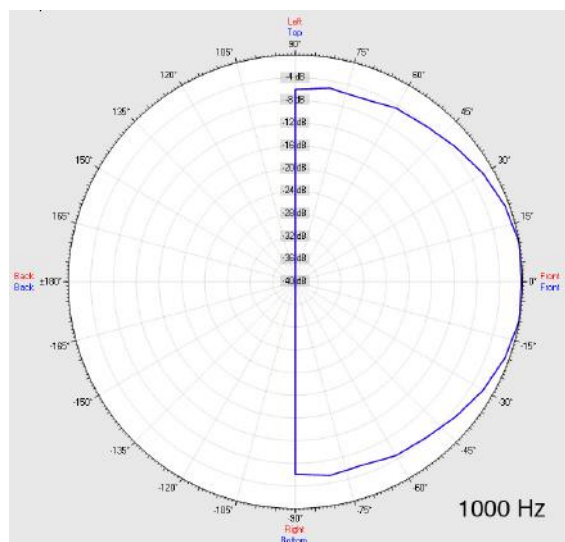
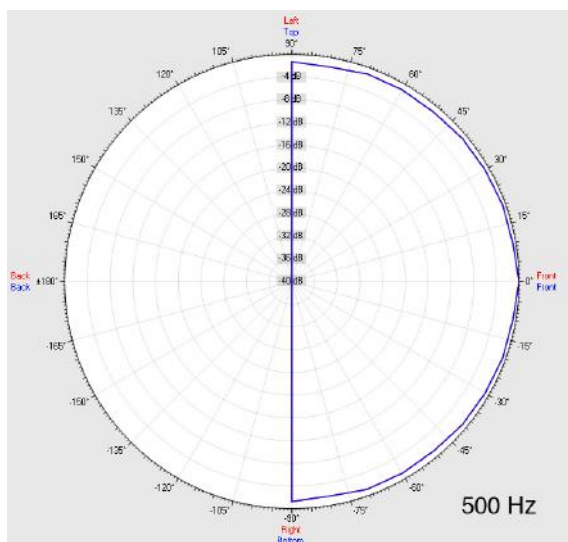
- High-Quality 2-way-system for advanced ELA-applications
- Two-part design via bayonet mounting
- Five touch-secure 100V-tappings
- Ball-attack protection according DIN 18032-3 included
- Custom colors and wet-room version by request
- Ceramic clamp & thermal fuse by request

- For even better music performance we recommend our LOUNGE and ESL models with Bass-Reflex-Enclosure.

DLS-265FT/30W-Esonic-808/EN5424

EN 54-24 Ceiling-Speaker
in Metal with 30 Watt Power and 2-Way - Technology

Radiation



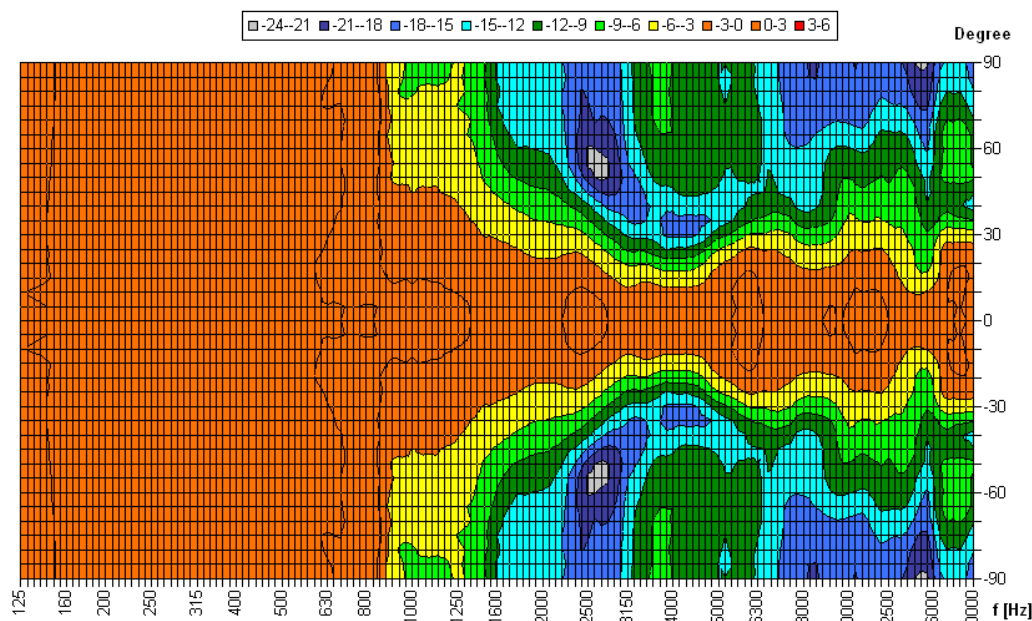
Test method	Axis	500 Hz	1000 Hz	2000 Hz	4000 Hz
EN 54-24	HOR	180°	180°	83°	38°
EN 54-24	VER	180°	180°	83°	38°
EASE/Ulysses	HOR	180°	180°	80°	35°
EASE/Ulysses	VER	180°	180°	80°	35°

DLS-265FT/30W-Esonic-808/EN5424

EN 54-24 Ceiling-Speaker
in Metal with 30 Watt Power and 2-Way - Technology

Isobar-Diagramm

Horizontal Isobars of: Elko-Schmid DLS-265F E-Sonic



Parameters: Cyclic Move: 0° ; Symmetry: 0..+180 sym ; Freq.Smooth: 1/3 Oct ; Ang.Resol.: 5° ; Rel. to: 0° Axis 0°



1293

Elko Schmid GmbH & Co. KG
Glauchauer Str. 30, D-08058 Zwickau

12

DoP: 498058129314-ICS-PN-0003

EN 54-24

Loudspeaker for voice alarm systems for
fire detection and fire alarm systems for buildings

DLS-265FT/30W-Esonic-808/EN5424

Intended Option:
Type A