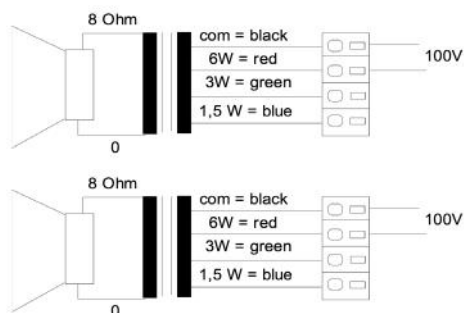
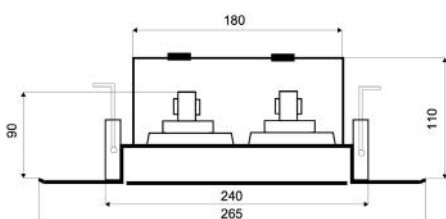
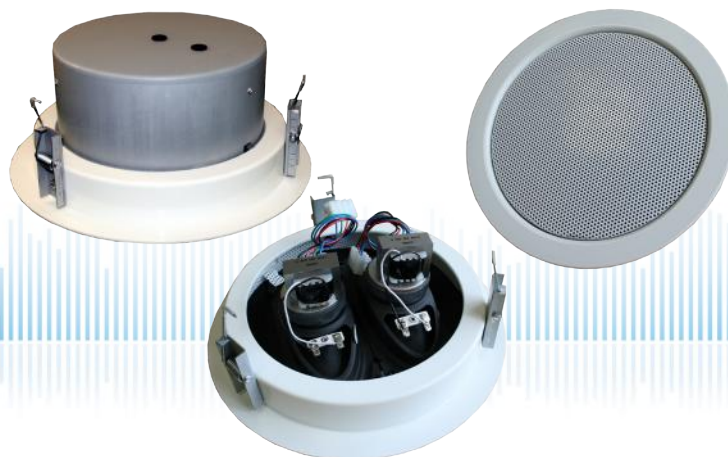


DLS-265AB/EN5424

EN 54-24 Ceiling-Speaker
in Metal with 2x 6 Watt Power for AB - Systems

EN
54-24



TECHNICAL DATA

DLS-265AB/EN5424

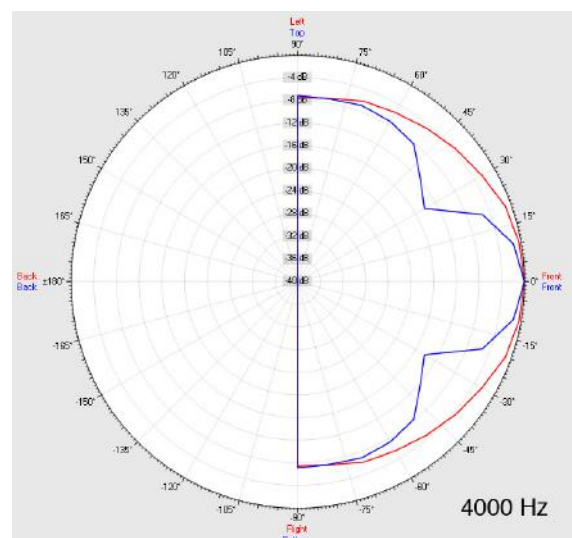
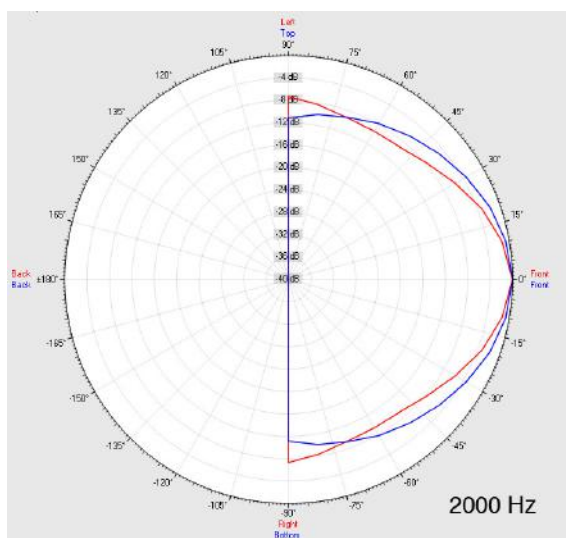
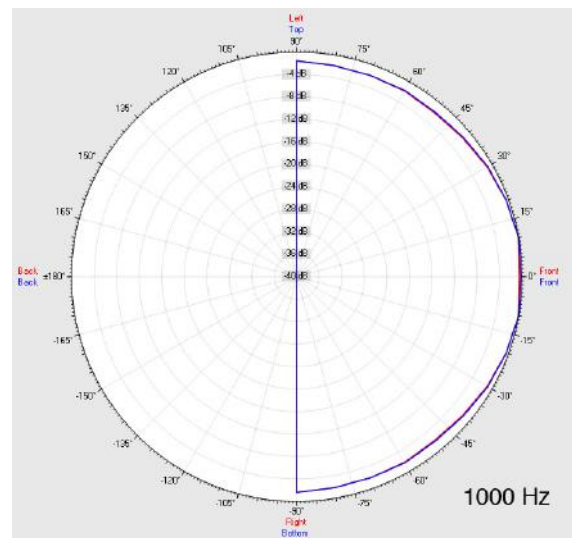
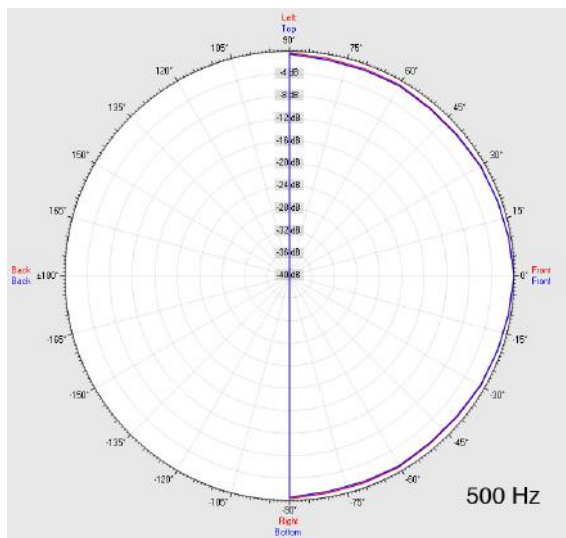
Loudspeaker:	2x 165 x 70mm - broadband
Power-Consumption:	2x 100V-6-3-1,5W
Frequency-Range:	70-20 000 Hz
EN-Sensitivity 1W/4M:	71,82 dB (1x), 77,82 dB (2x)
SPL max 6W/4M:	80 dB (1x), 86 dB (2x)
SPL 1W/1M max. EASE/Ulysses:	98 dB (1,8 kHz) (double)
SPL 6W/1M max. EASE/Ulysses:	106 dB (1,8 kHz) (double)
Radiation H (0,5/1/2/4KHz):	130°/130°/80°/85° (single)
Radiation V (0,5/1/2/4KHz):	110°/130°/85°/55° (single)
Dimension:	265 x 110 mm with firedome
Ceiling Cut-out:	240 mm
Suitable slab thickness:	1 mm - 35 mm
Weight:	2,3 kg with firedome
Material:	Metall
Color:	RAL 9010 / opt. RAL Classic
Certificate-Nr.:	1293-CPD-0237
Order-Nr.:	DLS-265AB/EN5424

- Two autonomous loudspeaker/100V-transformer per system
- Enables operation of speaker via two discrete cable-lines
- In case of failure of one line, continuous function of the second line
- Two-part design via bayonet mounting
- Custom colors & wet-room-version only available on DLS-series
- Three touch-secure 100V-tappings per line
- Ball-attack protection according DIN 18032-3 included
- Ceramic clamp & thermal fuse by request

DLS-265AB/EN5424

EN 54-24 Ceiling-Speaker
in Metal with 2x 6 Watt Power for AB - Systems

Radiation



Test method	Axis	500 Hz	1000 Hz	2000 Hz	4000 Hz
EN 54-24	HOR	130°	130°	80°	85°
EN 54-24	VER	110°	130°	85°	55°
EASE/Ulysses	HOR	180°	180°	70°	120°
EASE/Ulysses	VER	180°	180°	100°	40°

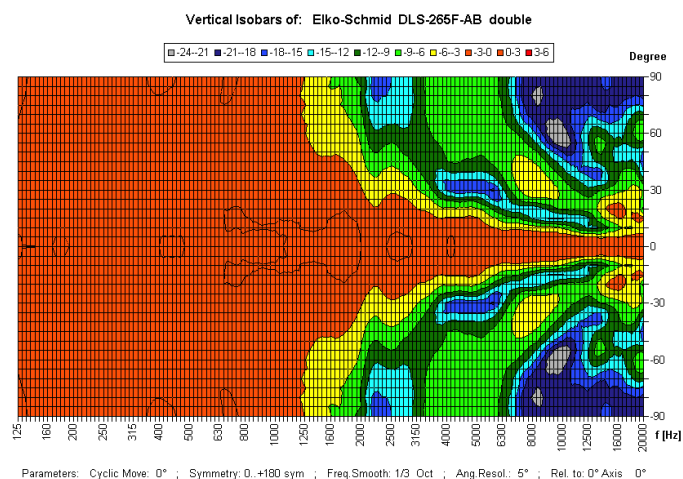
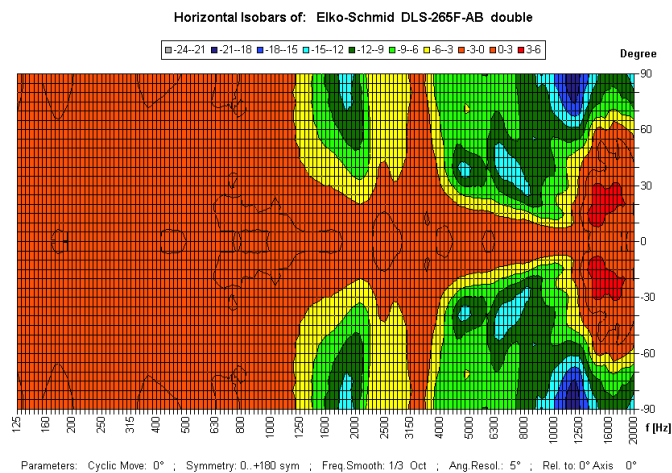
DLS-265AB/EN5424

EN 54-24 Ceiling-Speaker
in Metal with 2x 6 Watt Power for AB - Systems



Elektroakustische Komponenten

Isobar-diagram



CE

1293

Elko Schmid GmbH & Co. KG
Glauchauer Str. 30, D-08058 Zwickau

11

DoP: 498058129314-ICS-PN-0003

EN 54-24

Loudspeaker for voice alarm systems for
fire detection and fire alarm systems for buildings

DLS-265AB/EN5424

Intended Option:
Type A