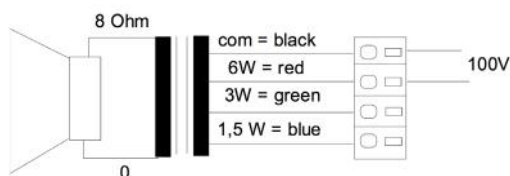
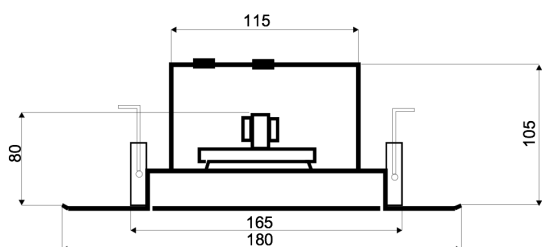


# DLS-180FT/EN5424

EN 54-24 Ceiling-Speaker  
in Metal with 6 Watt Power

EN  
54-24



## TECHNICAL DATA

## DLS-180FT/EN5424

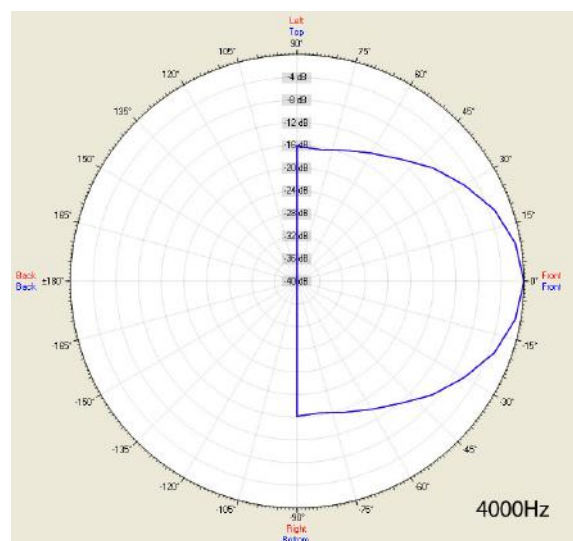
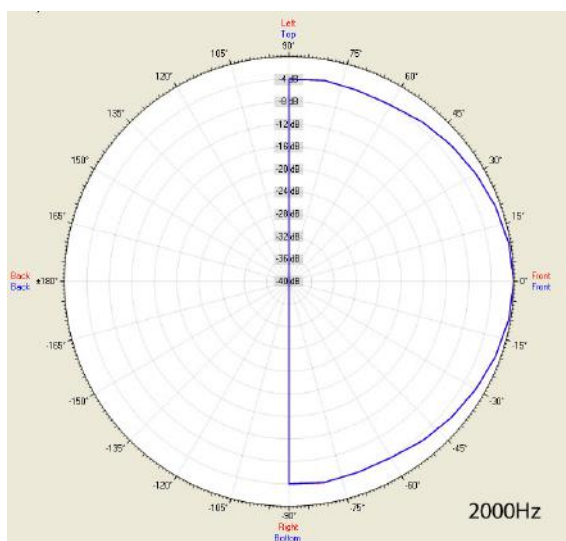
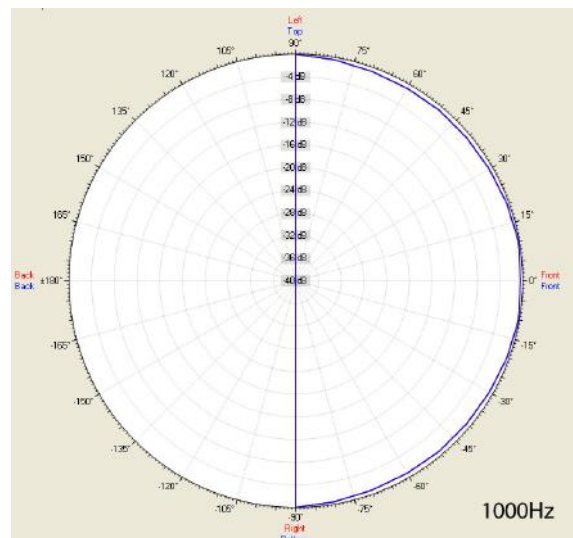
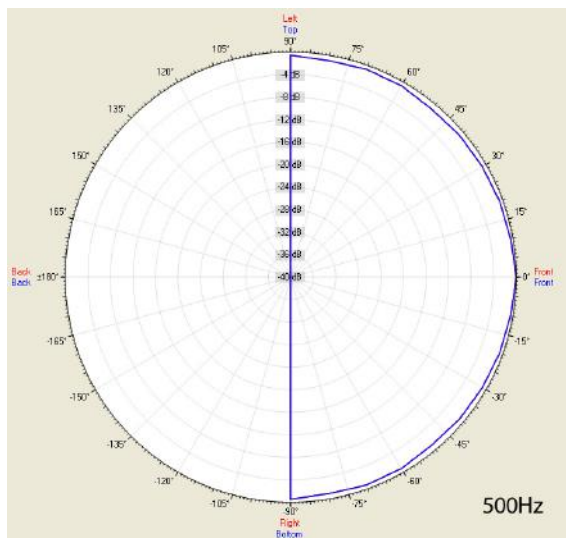
Loudspeaker:	120mm - broadband
Power-Consumption:	100V-6-3-1,5W
Frequency-Range:	80-15 000 Hz
EN-Sensitivity 1W/4M:	75,51 dB
SPL max 6W/4M:	84 dB
SPL 1W/1M max. EASE/Ulysses:	100,0 dB
SPL 6W/1M max. EASE/Ulysses:	108,0 dB
Radiation H (0,5/1/2/4KHz):	160°/140°/90°/58°
Radiation V (0,5/1/2/4KHz):	160°/140°/90°/58°
Dimension:	180 mm x 105 mm with firedome
Ceiling Cut-out:	165 mm
Suitable slab thickness:	1 mm - 35 mm
Weight:	1,1 kg
Material:	Metal
Color:	RAL 9010 / opt. RAL Classic
Certificate-Nr.:	1293-CPD-0239
Order-Nr.:	DLS-180FT/EN5424

- Two-part design via bayonet mounting
- Three touch-secure 100V-tappings
- Ball-attack protection according DIN 18032-3 included
- Custom colors and wet-room version by request
- Ceramic clamp & thermal fuse by request

# DLS-180FT/EN5424

EN 54-24 Ceiling-Speaker  
in Metal with 6 Watt Power

## Radiation



Test method	Axis	500 Hz	1000 Hz	2000 Hz	4000 Hz
EN 54-24	HOR	160°	140°	90°	58°
EN 54-24	VER	160°	140°	90°	58°
EASE/Ulysses	HOR	180°	180°	180°	60°
EASE/Ulysses	VER	180°	180°	180°	60°

# DLS-180FT/EN5424

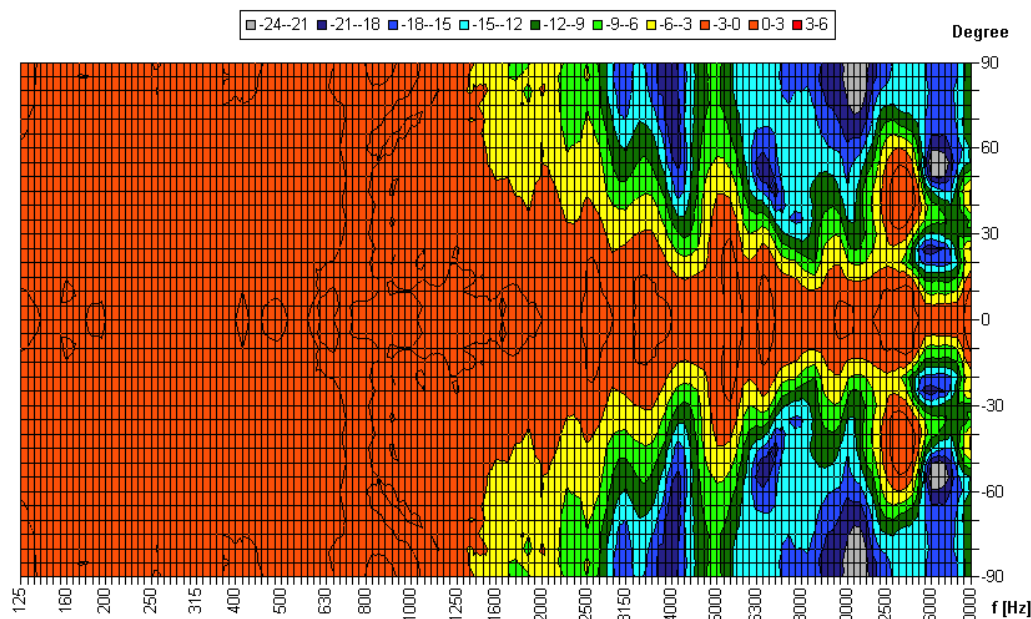
EN 54-24 Ceiling-Speaker  
in Metal with 6 Watt Power



Elektroakustische Komponenten

## Isobar-Diagramm

Horizontal Isobars of: Elko-Schmid DLS-180 FT



Parameters: Cyclic Move: 0° ; Symmetry: 0..+180 sym ; Freq.Smooth: 1/6 Oct ; Ang.Resol.: 5° ; Rel. to: 0° Axis 0°



1293

Elko Schmid GmbH & Co. KG  
Glauchauer Str. 30, D-08058 Zwickau

11

DoP: 498058129314-ICS-PN-0003

EN 54-24

Loudspeaker for voice alarm systems for  
fire detection and fire alarm systems for buildings

DLS-180FT/EN5424

Intended Option:  
Type A