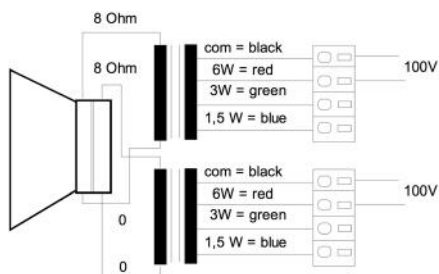
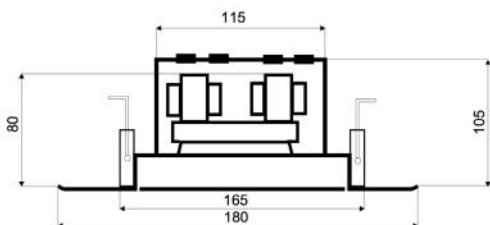
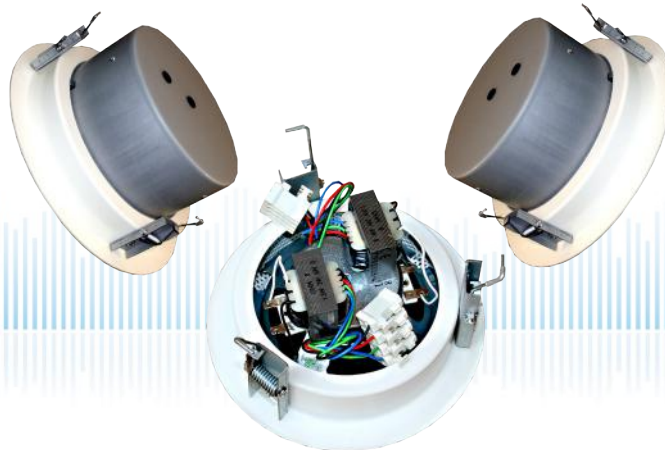


DLS-180-DC/EN5424

EN 54-24 Ceiling-Speaker

in Metal with 2x 6 Watt Power and AB-Dual-Cone-Technique

EN
54-24



TECHNICAL DATA

DLS-180-DC/EN5424

Loudspeaker:	5" - broadband with Dual Voice Coil
Power-Consumption:	2x 100V-6-3-1,5W
Frequency-Range:	80-17 000 Hz
EN-Sensitivity 1W/4M:	70 dB (single), 76 dB (double)
SPL max 6W/4M:	84 dB (single), 90 dB (double)
SPL 1W/1M max. EASE/Ulysses:	99,5 dB (4 kHz) (double)
SPL 6W/1M max. EASE/Ulysses:	106,5 dB (4 kHz) (double)
Radiation H (0,5/1/2/4KHz):	180°/180°/166°/67° (single)
Radiation V (0,5/1/2/4KHz):	180°/180°/166°/67° (single)
Dimension:	180 x 105 mm with firedome
Ceiling Cut-out:	165 mm
Suitable slab thickness:	1 mm - 35 mm
Weight:	1,7 kg
Material:	Metal
Color:	RAL 9010 / white / opt. RAL Classic
Certificate-Nr.:	1293-CPR-0426
Order-Nr.:	DLS-180-DC/EN5424-RAL9010 DLS-180-DC/EN5424-WHITE

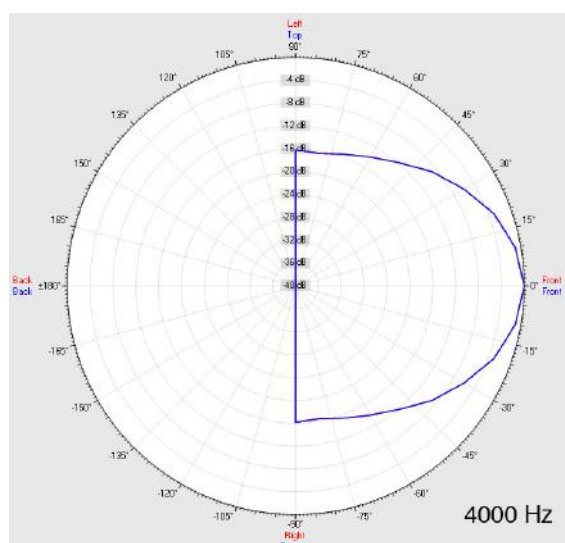
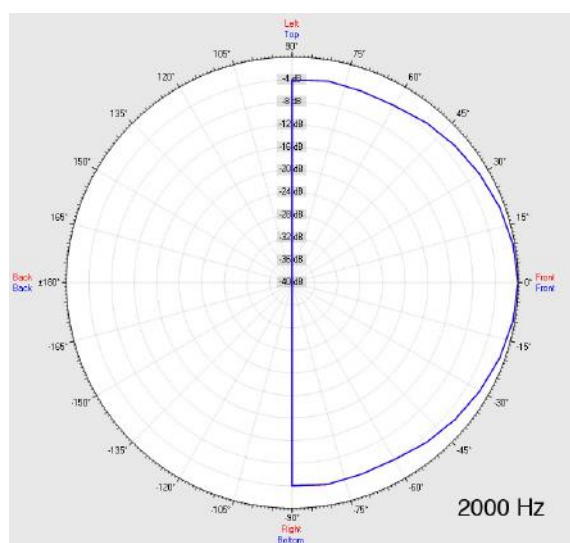
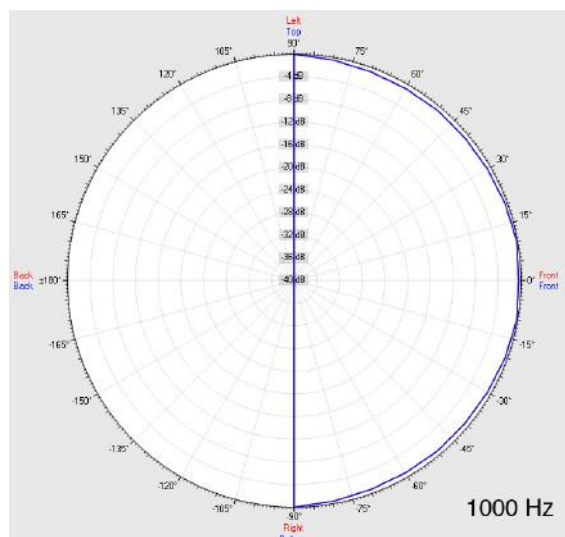
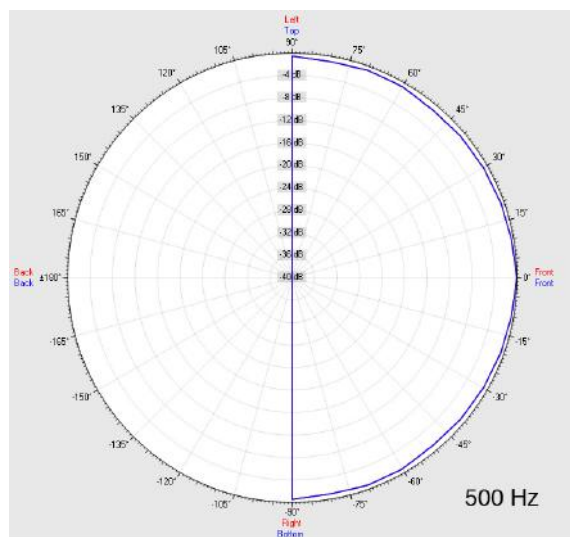
- Two autonomous loudspeaker/100V-transformer per system
- No bisection of the membrane surface
- In case of breakdown of one line, continuous function of the second
- Two-part design via bayonet mounting
- Ball-attack protection according DIN 18032-3 included
- Custom colors and wet-room version by request
- Ceramic clamp & thermal fuse by request
- Always check full functionality of the line monitoring before using our dual voice coil products.

DLS-180-DC/EN5424

EN 54-24 Ceiling-Speaker

in Metal with 2x 6 Watt Power and AB-Dual-Cone-Technique

Radiation



Test method	Axis	500 Hz	1000 Hz	2000 Hz	4000 Hz
EN 54-24	HOR	180°	180°	166°	67°
EN 54-24	VER	180°	180°	166°	67°
EASE/Ulysses	HOR	180°	180°	180°	60°
EASE/Ulysses	VER	180°	180°	180°	60°

DLS-180-DC/EN5424

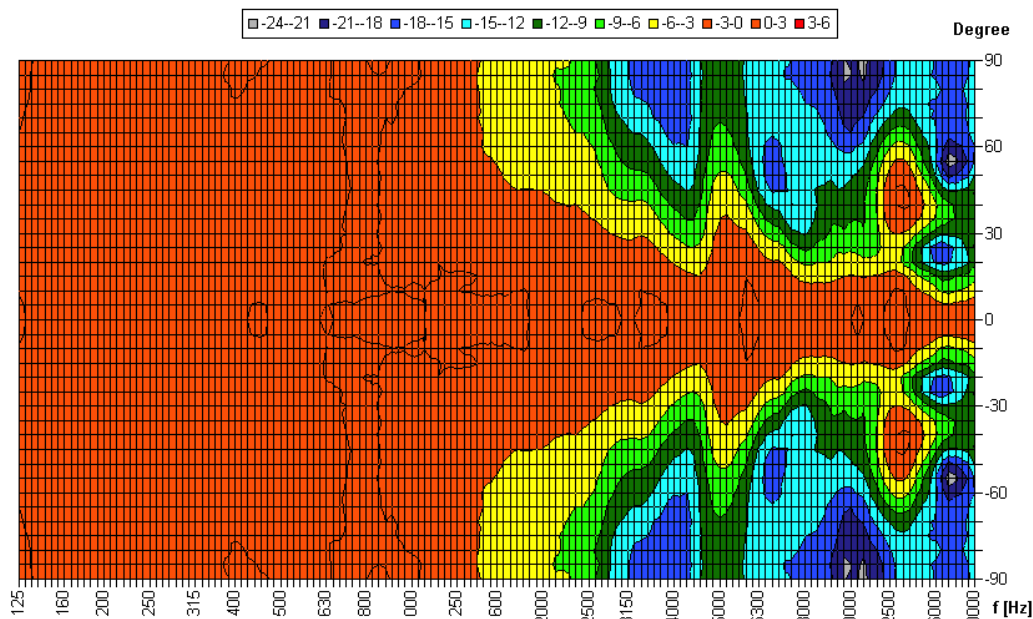
EN 54-24 Ceiling-Speaker

in Metal with 2x 6 Watt Power and AB-Dual-Cone-Technique

Elektroakustische Komponenten

Isobar-diagram

Horizontal Isobars of: Elko-Schmid DLS-180-DC



Parameters: Cyclic Move: 0° ; Symmetry: 0..+180 sym ; Freq.Smooth: 1/3 Oct ; Ang.Resol.: 5° ; Rel. to: 0° Axis 0°



1293

Elko Schmid GmbH & Co. KG
Glauchauer Str. 30, D-08058 Zwickau

14

DoP: 498058129314-ICS-PN-0003

EN 54-24

Loudspeaker for voice alarm systems for
fire detection and fire alarm systems for buildings

DLS-180-DC/EN5424

Intended Option:
Type A