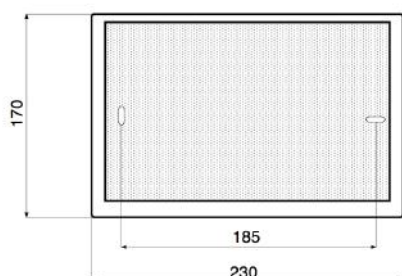
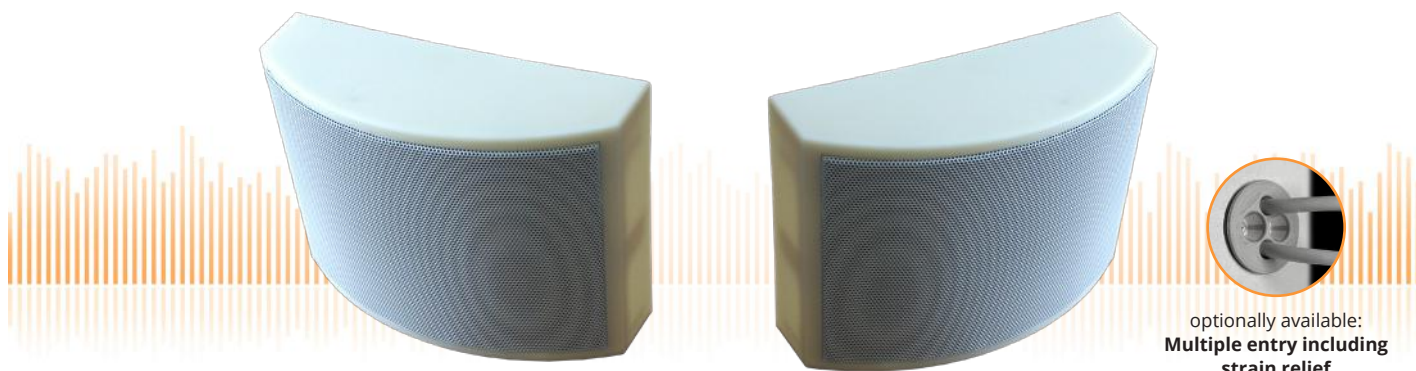


## DESIGN-230-II

Wall / On-Ceiling - Speaker

in ABS/Metal with 10 Watt Power and 2-Way - Technology



### TECHNICAL DATA

### DESIGN-230-II

Loudspeaker:	2-Way System
Power-Consumption:	100V-10-6-3W
Frequency-Range:	70-20 000 Hz
SPL 1W/1M:	93 dB
SPL 10W/1M:	103 dB
Radiation:	180° (1,2 kHz)
Dimension:	230 x 170 x 80 mm
Weight:	1,6 kg
Material:	ABS
Color:	white

- High Quality 2-Way System with 10-6-3W tapings
- New softly bended Design-Cabinet
- Easy mounting through Quick-Snap-Rear-Panel
- Only two drilling-points for the whole loudspeaker
- Stable ABS cabinet of very low flammability
- Three touch-secure 100V-tappings
- Optional:
  - Custom colors
  - 6/10W broadband version
  - Ceramic clamp & thermal fuse
  - Multiple entry including strain relief