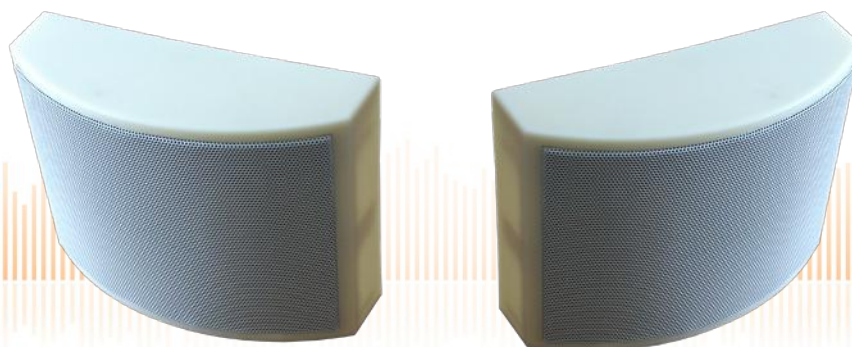


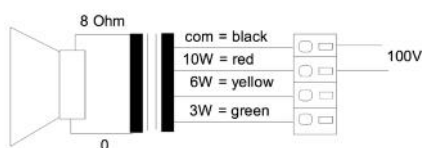
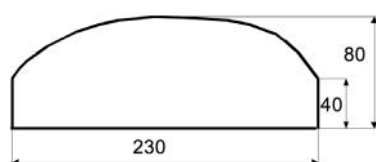
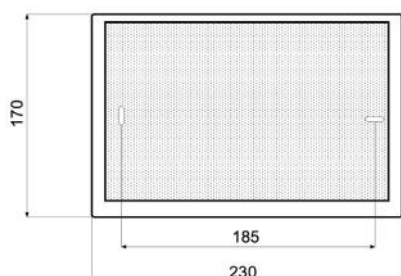
DESIGN-230-II-10W/EN5424

EN 54-24 Wall / On-Ceiling - Speaker
in ABS with 10 Watt Power and 2-Way - Technology

EN
54-24



optionally available:
**Multiple entry including
strain relief**



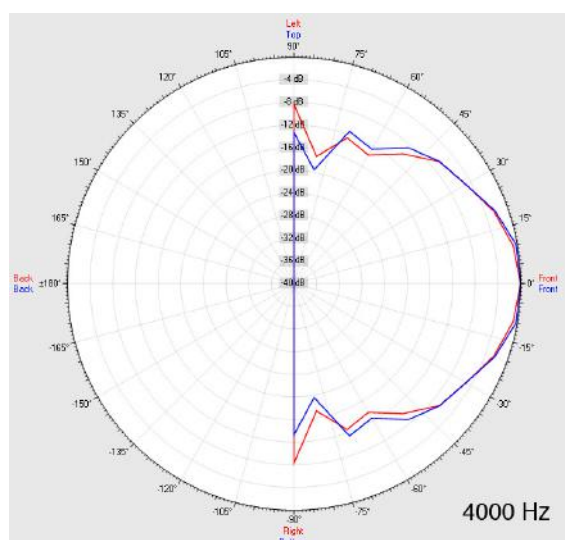
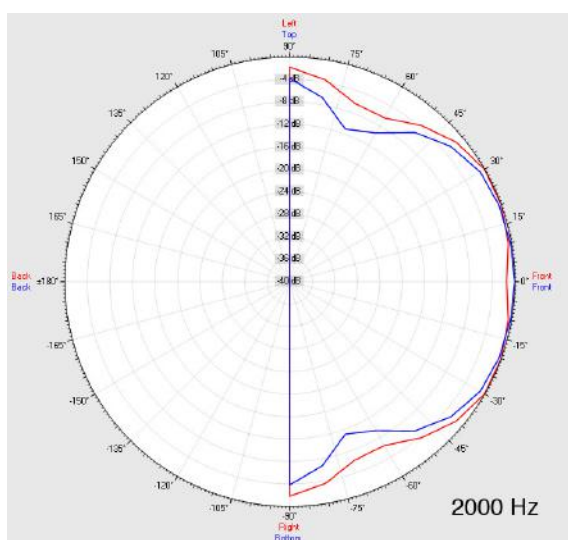
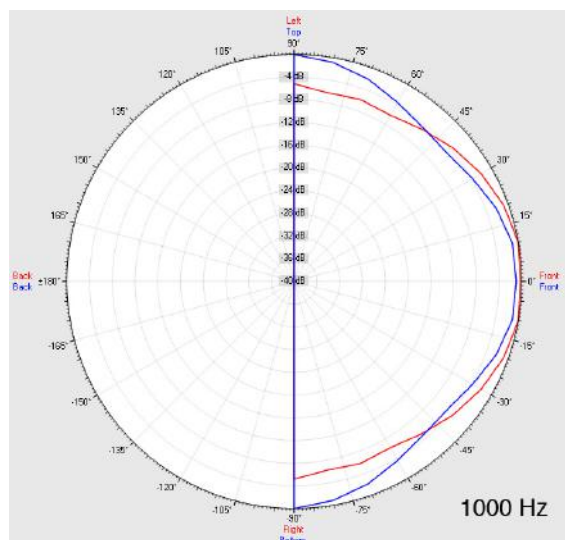
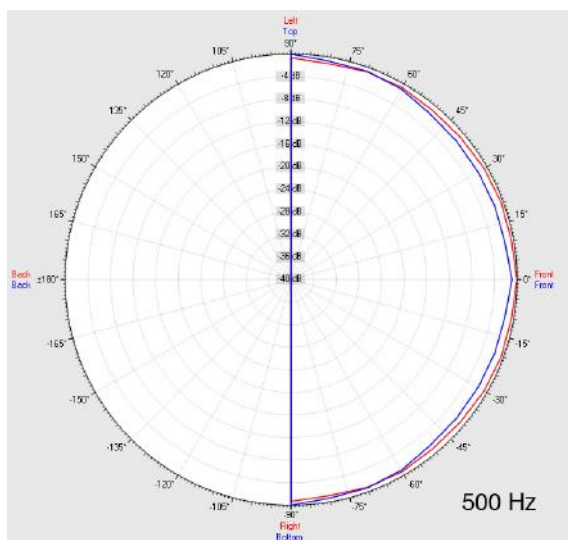
TECHNICAL DATA	DESIGN-230-II-10W/EN5424
Loudspeaker:	2-Way-System
Power-Consumption:	100V-10-6-3W
Frequency-Range:	70-20 000 Hz
EN-Sensitivity 1W/4M:	77 dB
SPL max 10W/4M:	87 dB
SPL 1W/1M max. EASE/Ulysses:	97 dB (4 kHz)
SPL 10W/1M max. EASE/Ulysses:	107 dB (4 kHz)
Radiation H (0,5/1/2/4KHz):	180°/180°/117°/66°
Radiation V (0,5/1/2/4KHz):	180°/180°/106°/50°
Dimension:	230 x 170 x 80 mm
Weight:	1,6 kg
Material:	ABS / HB75
Color:	white
Certificate-Nr.:	1293-CPD-0370
Order-Nr.:	DESIGN-230-II-10W/EN5424

- New softly bended Design-Cabinet
- 2-Way-System with 100V/10-6-3W tappings
- Easy mounting through Quick-Snap-Rear-Panel
- Only two drilling-points for the whole loudspeaker
- Flame retardent material acc. to EN 60695-11-20, 5VB
- Custom colors optional
- Wetroom-version with ALU-grill and impregnation obtainable
- Three touch-secure 100V-tappings
- Ceramic clamp & thermal fuse by request
- Optional multiple entry including strain relief available

DESIGN-230-II-10W/EN5424

EN 54-24 Wall / On-Ceiling - Speaker
in ABS with 10 Watt Power and 2-Way - Technology

Radiation

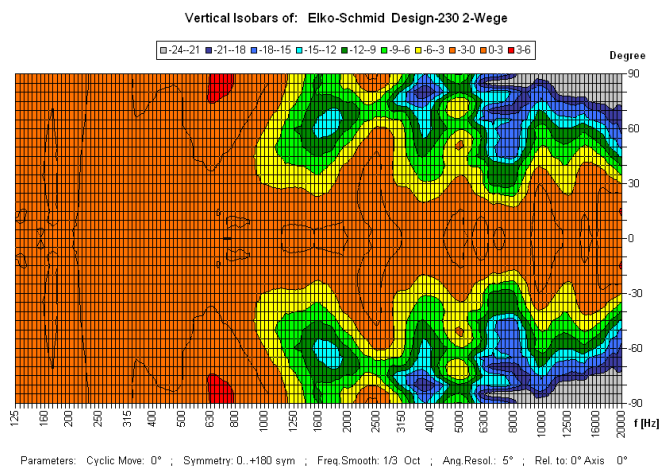
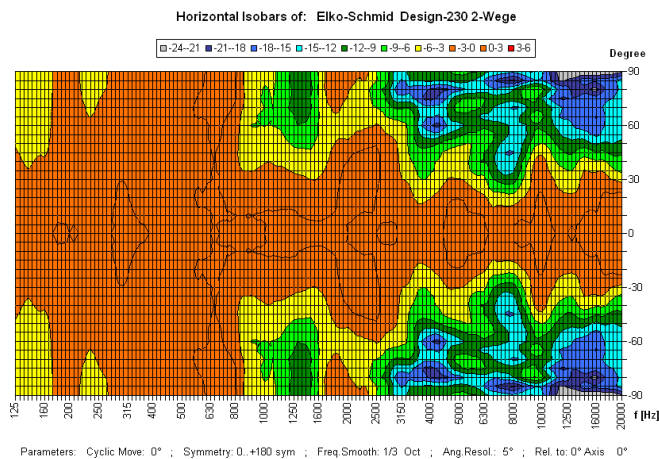


Test method	Axis	500 Hz	1000 Hz	2000 Hz	4000 Hz
EN 54-24	HOR	180°	180°	117°	106°
EN 54-24	VER	180°	180°	106°	50°
EASE/Ulysses	HOR	180°	180°	180°	70°
EASE/Ulysses	VER	180°	180°	105°	65°

DESIGN-230-II-10W/EN5424

EN 54-24 Wall / On-Ceiling - Speaker
in ABS with 10 Watt Power and 2-Way - Technology

Isobar-Diagramm



CE

1293

Elko Schmid GmbH & Co. KG
Glauchauer Str. 30, D-08058 Zwickau

11

DoP: 498058129314-OWS-PN-0002

EN 54-24

Loudspeaker for voice alarm systems for
fire detection and fire alarm systems for buildings

DESIGN-230-II-10W/EN5424

Intended Option:
Type A