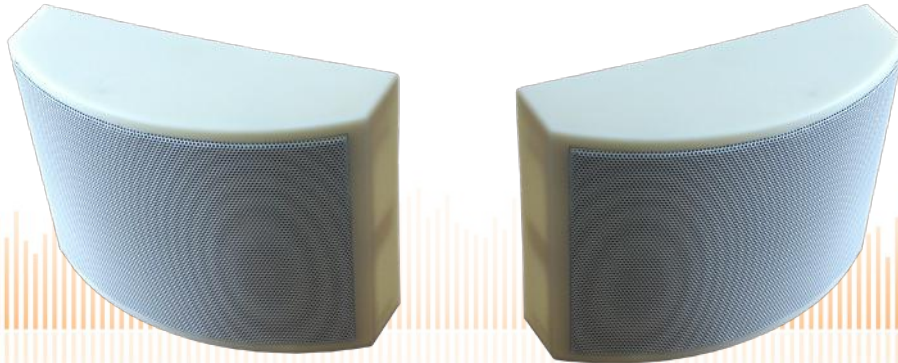


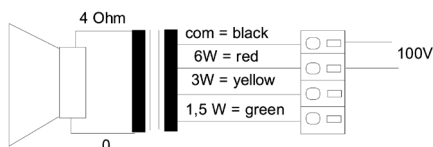
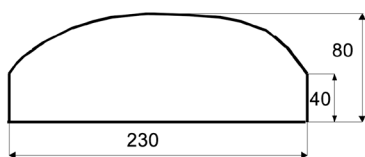
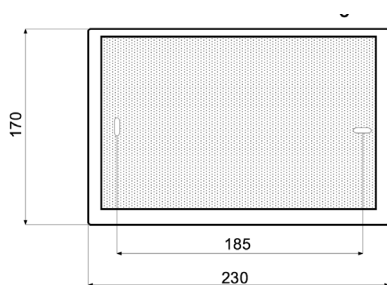
DESIGN-230/EN5424

EN 54-24 Wall / On-Ceiling - Speaker
in ABS with 6 Watt Power

EN
54-24



optionally available:
**Multiple entry including
strain relief**



TECHNICAL DATA

DESIGN-230/EN5424

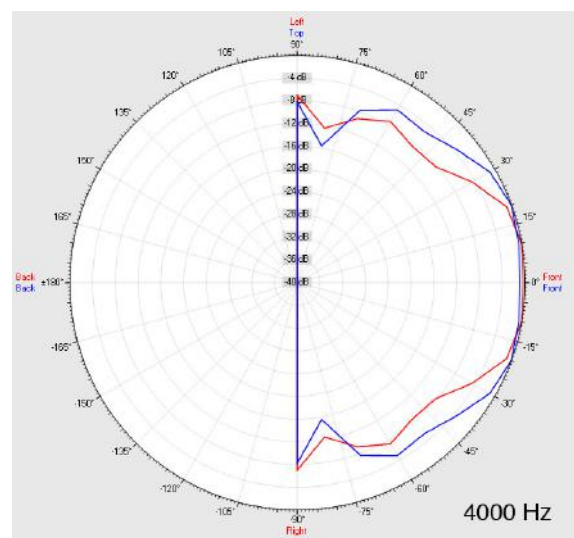
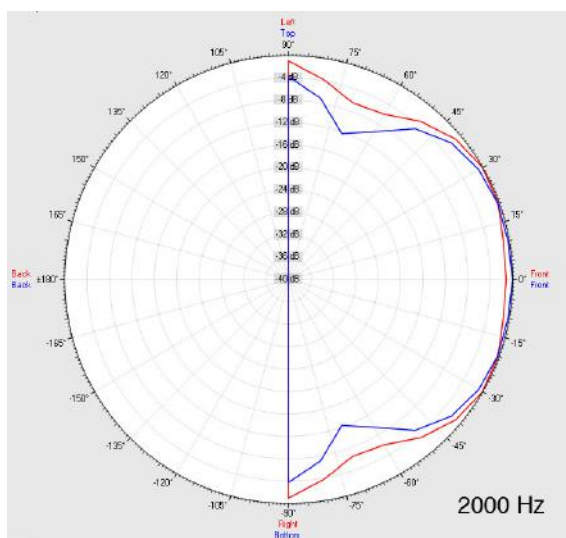
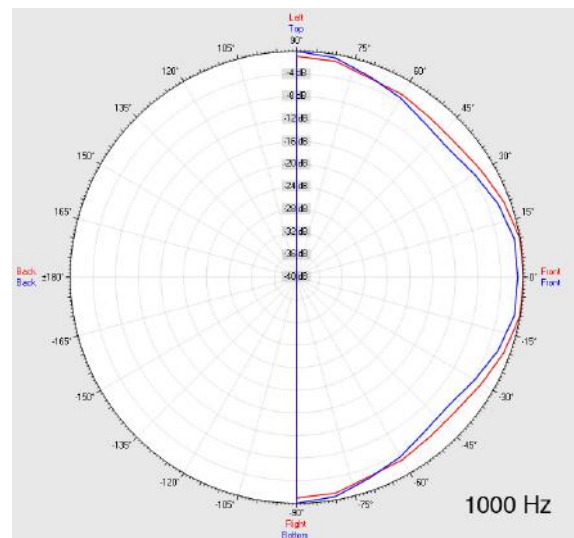
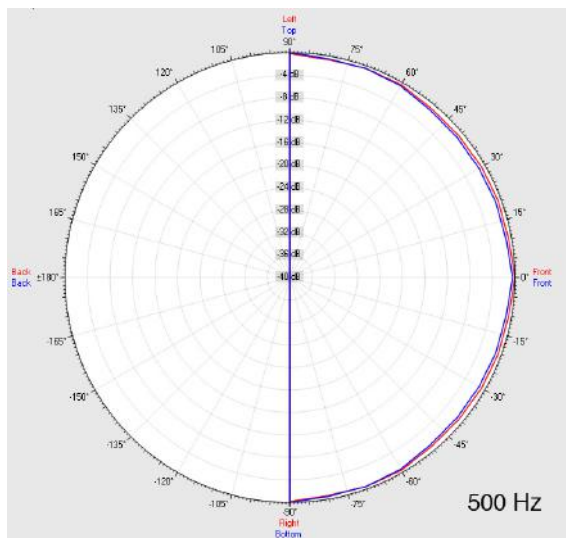
Loudspeaker:	120mm - broadband
Power-Consumption:	100V-6-3-1,5W
Frequency-Range:	80-15 000 Hz
EN-Sensitivity 1W/4M:	77,1 dB
SPL max 6W/4M:	87 dB
SPL 1W/1M max. EASE/Ulysses:	98,5 dB (1,3 kHz)
SPL 6W/1M max. EASE/Ulysses:	104,5 dB (1,3 kHz)
Radiation H (0,5/1/2/4KHz):	130°/105°/100°/70°
Radiation V (0,5/1/2/4KHz):	130°/115°/55°/65°
Dimension:	230 x 170 x 80 mm
Weight:	1,2 kg
Material:	ABS / HB75
Color:	white
Certificate-Nr.:	1293-CPR-0566
Ordert-Nr.:	DESIGN-230/EN5424

- New softly bended Design-Cabinet
- Easy mounting through Quick-Snap-Rear-Panel
- Only two drilling-points for the whole loudspeaker
- Flame retardent material acc. to EN 60695-11-20, 5VB
- Custom colors optional
- Wetroom-version with ALU-grill and impregnation obtainable
- Three touch-secure 100V-tappings
- Ceramic clamp & thermal fuse by request
- Optional multiple entry including strain relief available

DESIGN-230/EN5424

EN 54-24 Wall / On-Ceiling - Speaker
in ABS with 6 Watt Power

Radiation

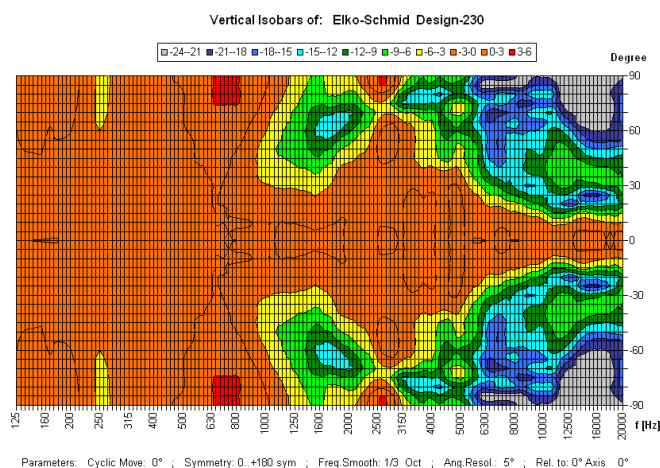
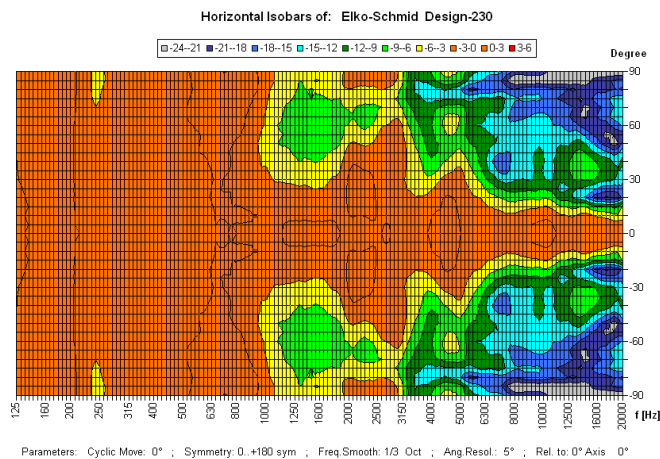


Test method	Axis	500 Hz	1000 Hz	2000 Hz	4000 Hz
EN 54-24	HOR	130°	105°	100°	70°
EN 54-24	VER	130°	115°	55°	65°
EASE/Ulysses	HOR	180°	180°	180°	65°
EASE/Ulysses	VER	180°	180°	110°	130°

DESIGN-230/EN5424

EN 54-24 Wall / On-Ceiling - Speaker
in ABS with 6 Watt Power

Isobar-Diagramm




1293

Elko Schmid GmbH & Co. KG
Glauchauer Str. 30, D-08058 Zwickau

11

DoP: 498058129314-OWS-PN-0002

EN 54-24

Loudspeaker for voice alarm systems for
fire detection and fire alarm systems for buildings

Design-230/EN5424

Intended Option:
Type A