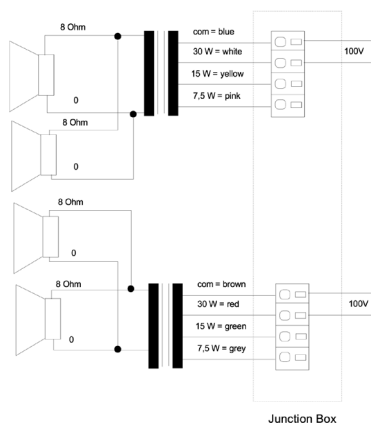
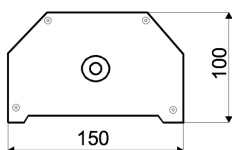
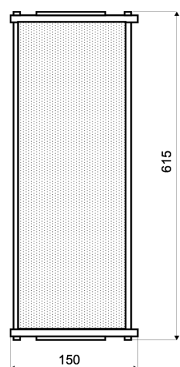


# CS-50WA-AB/EN5424

EN 54-24 Column-Speaker for Outdoor Use  
in ALU / SS with 2x 30 Watt Power for AB - Systems

EN  
54-24



## TECHNICAL DATA

## CS-50WA-AB/EN5424

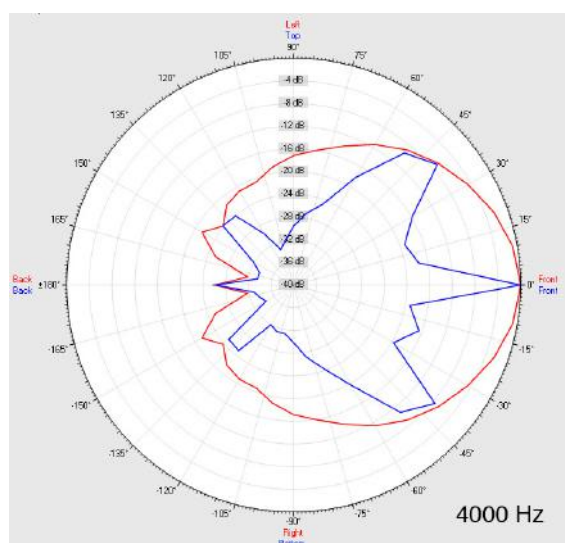
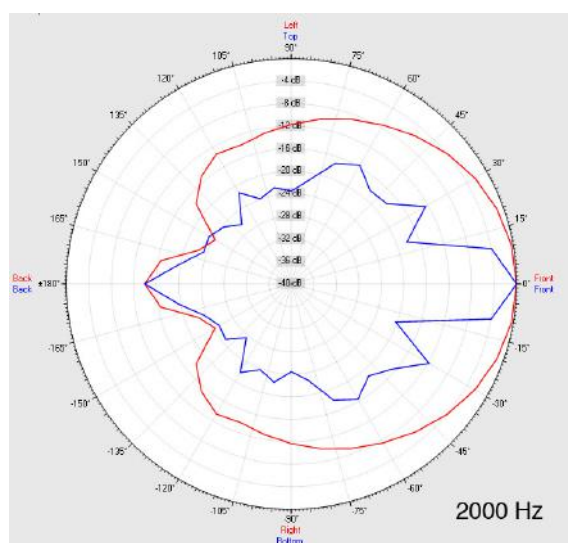
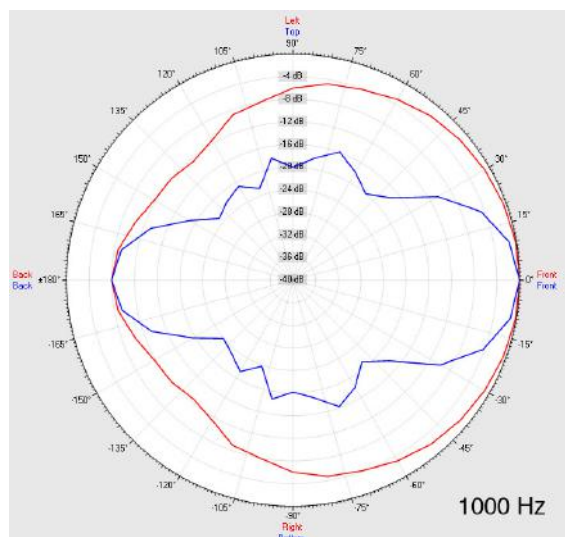
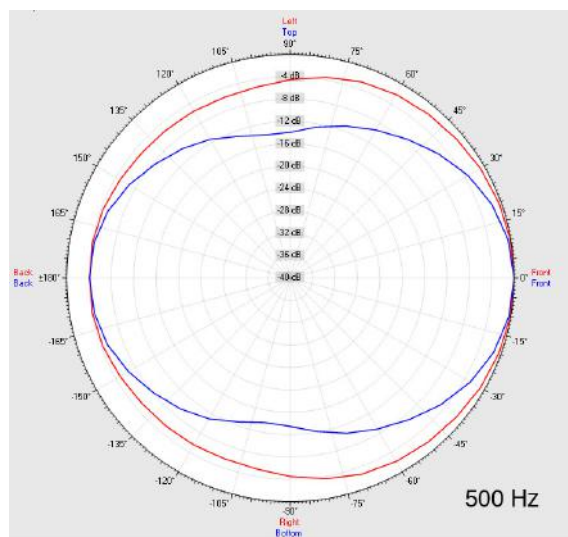
Loudspeaker:	2x2 broadband
Power-Consumption:	2x 100V-30-15-7,5W
Frequency-Range:	70-18 000 Hz
EN-Sensitivity 1W/4M:	76 dB (1x), 82 dB (2x)
SPL max 30W/4M:	92 dB (1x), 98 dB (2x)
SPL 1W/1M max. EASE/Ulysses:	101 dB (2,5 kHz) (double)
SPL 30W/1M max. EASE/Ulysses:	115 dB (2,5 kHz) (double)
Radiation H (0,5/1/2/4KHz):	360°/210°/122°/80° (single)
Radiation V (0,5/1/2/4KHz):	150°/182°/55°/24° (single)
EN degree:	EN Type B, weather-proof, outdoor-certificated
Dimension:	615 x 150 x 100mm
Weight:	3,9 kg
Material:	ALU / Stainless Steel
Color:	black or white / Holder Stainless Steel
Certificate-Nr.:	1293-CPR-0448
Order-Nr.:	CS-50WA-AB/EN5424-BK (black) CS-50WA-AB/EN5424-WH (white)

- Two autonomous loudspeaker/100V-transformer per system
- Enable operation of speaker via two discrete cable-lines
- ALU-grill & ABS-iner-panel, SS bracket & screws
- Ball-attack certified version acc. to DIN 18032-3 obtainable
- Special DIN 912-ISO 4762 screws
- Three touch-secure 100V-tappings
- Ceramic clamp & thermal fuse by request

# CS-50WA-AB/EN5424

EN 54-24 Column-Speaker for Outdoor Use  
in ALU / SS with 2x 30 Watt Power for AB - Systems

## Radiation



Test method	Axis	500 Hz	1000 Hz	2000 Hz	4000 Hz
EN 54-24	HOR	360°	210°	122°	80°
EN 54-24	VER	150°	182°	55°	24°
EASE/Ulysses	HOR	360°	180°	105°	85°
EASE/Ulysses	VER	85°	50°	25°	15°

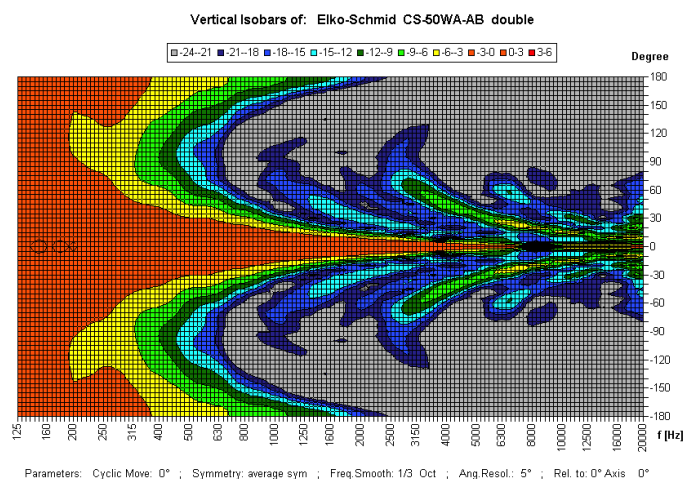
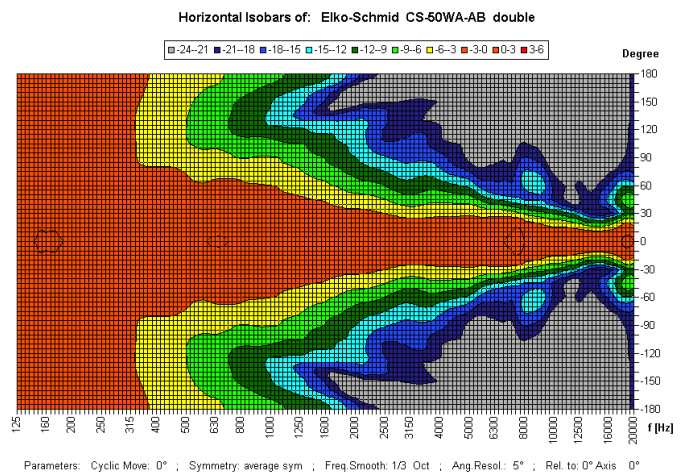
# CS-50WA-AB/EN5424

EN 54-24 Column-Speaker for outdoor use  
in ALU / SS with 2x 30 Watt Power for AB - Systems



Elektroakustische Komponenten

## Isobar-diagram



CE

1293

Elko Schmid GmbH & Co. KG  
Glauchauer Str. 30, D-08058 Zwickau

12

DoP: 498058129314-OWS-PN-0017

EN 54-24

Loudspeaker for voice alarm systems for  
fire detection and fire alarm systems for buildings

CS-50WA-AB/EN5424

Intended option:  
Type B