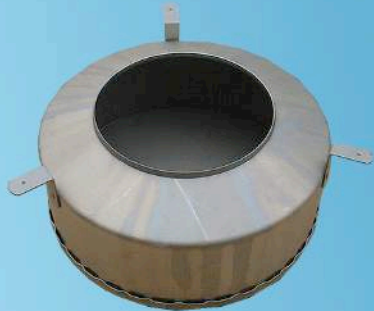
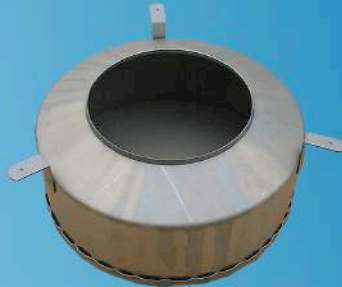


# ACCESSORY FOR CEILING/IN-WALL & ON-WALL-LOUDSPEAKER-SYSTEMS

**A  
C  
C  
E  
S  
S  
O  
R  
Y**



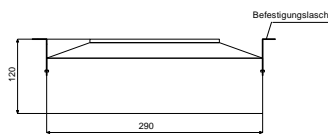
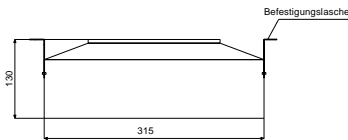
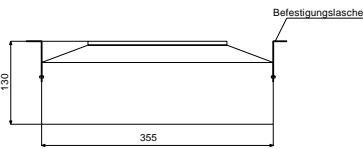
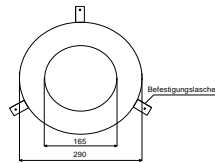
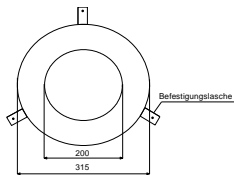
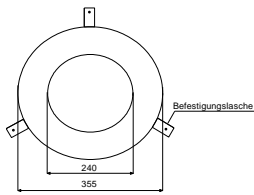
UP-265F



UP-220F



UP-180F



- IN-WALL/CONCRETE-DOME **UP** AND FIRE-DOME **FT** RUST-PROTECTED
- IN-WALL/CONCRETE-DOME **UP** FOR SDL/QDL-170F & EPS-2000 OPT.
- EVERY FIRE-DOME & IN-WALL-DOME IN CUSTOM-SIZE OBTAINABLE
- **VOLUME-CONTROL & 24-V-RELAY** IN DIFFERENT VARIATIONS AVAILABLE



**WLA**

**WHL**

**WLQ**

**A.O.**



FT-265F



FT-220F



FT-180F

