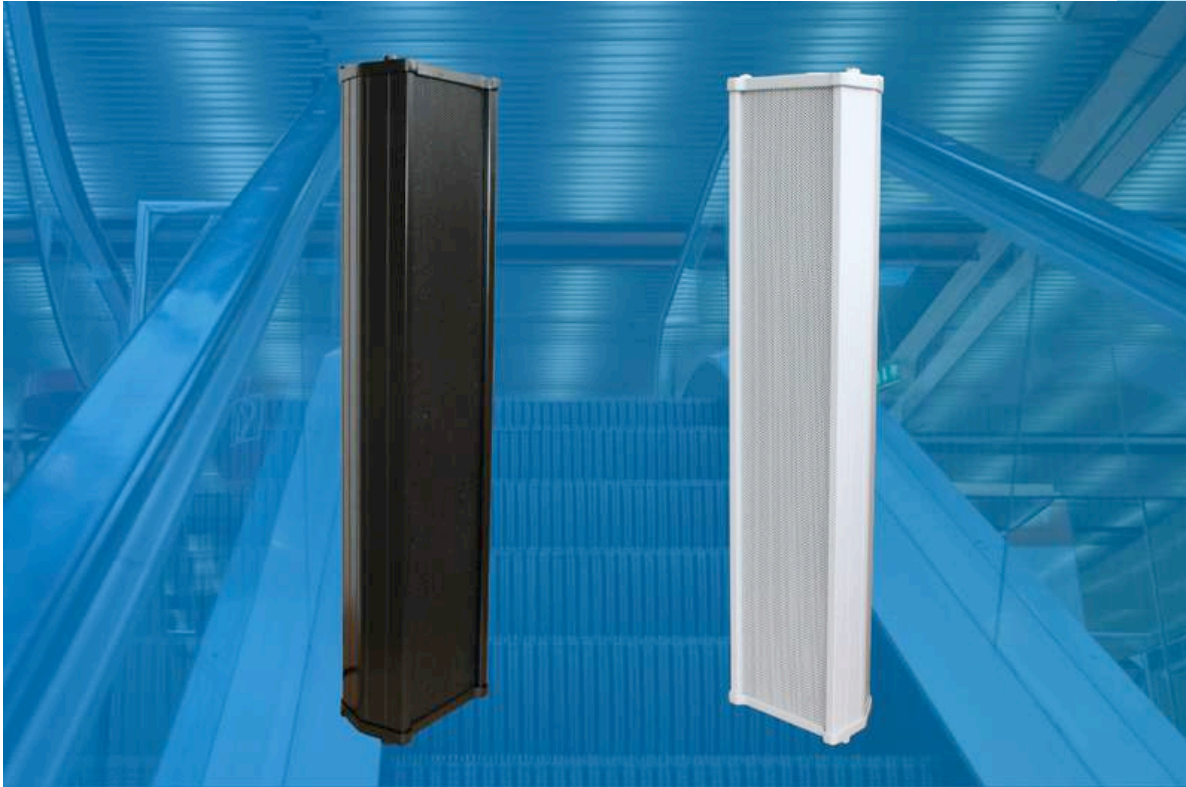


# WEATHER-PROOF-ALUMINIUM-Column-Speaker CS-50-WA



CS  
50  
WA

ALU

WEATHER  
PROOF

50 W

40 W

30 W

20 W

- WEATHER-PROOF THROUGH STABLE ALUMINIUM-CASING
- V2A BRACKET & SCREWS
- ALU-GRILL & ABS-INNER-PANEL
- STEAM/DAMPNESS-PROTECTED & DUST-PROTECTED
- BALL-ATTACK-PROTECTED
- 50-40-30-20-WATT 100-VOLT-TAPS
- OPTIONAL CERAMIC-CONNECTING-CLAMP & THERMO-FUSE AVAILABLE
- BALL-ATTACK-CERTIFICATED VERSION ACC. TO DIN 18032/III OBTAINABLE

TECHN. DATA:	CS-50WA WHITE	CS-50WA BLACK
Nominal Power:	60-Watt	60-Watt
100-V-Taps:	100V-50-40-30-20-Watt	100V-50-40-30-20-Watt
FQ-Range:	70-18000 Hz	70-18000 Hz
SPL 1W/1m:	98 dB	98 dB
SPL NW/1m:	115 dB	115 dB
Dimensions:	615 x 150x 100 mm	615 x 150x 100 mm
Weight:	3,9 Kg	3,9 Kg
Colour:	white	black

