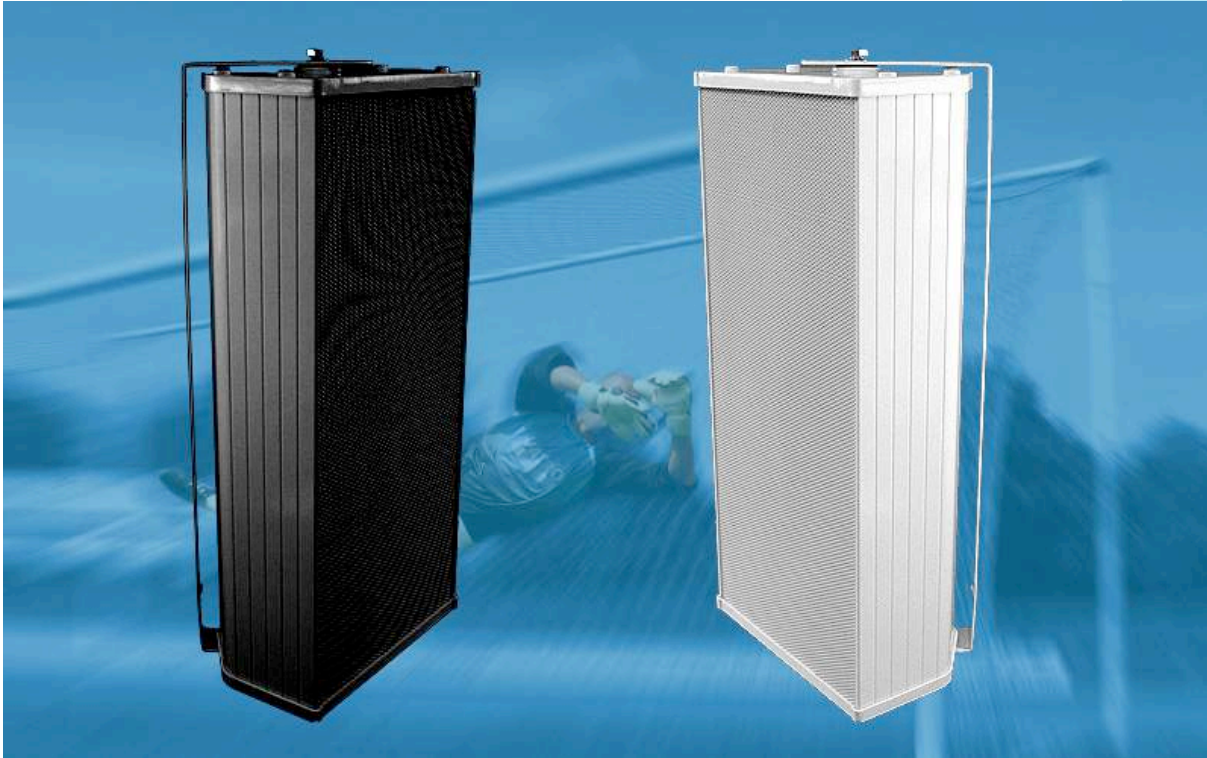


200W-ALU-COLUMN-SPEAKER POWERSTATION-200 FOR A/B-SYSTEM-LINES



P
O
W
E
R
S
T
A
T
I
O
N

200
A / B

ALU

V2A

W
E
A
T
H
E
R

P
R
O
O
F

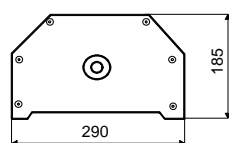
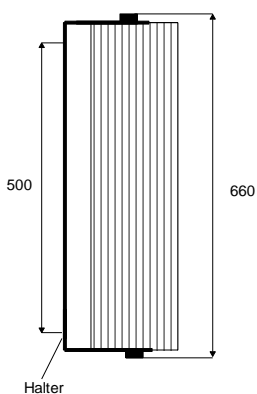
2 x 100 W

2 x 50 W

2 x 25 W

- WEATHER-PROOF THROUGH ALUMINIUM-CASING & V2A-GRILL
- V2A BRACKET/SCREWS
- ALUMINIUM-INNER-PANEL
- STEAM/DAMPNESS-PROTECTED
- SPECIAL COATED LOUDSPEAKER
- INDOOR & OUTDOOR USE
- 2 x 100-50-25W / 100-VOLT-TAPS
- 1 x 10"-KOAXIAL-SYSTEM PER LINE
- OPTIONAL CERAMIC-CLAMP & THERMO-FUSE AVAILABLE
- BALL-ATTACK-CERTIFICATED VERSION ACC. TO DIN 18032/III OPTIONAL
- POWER-SOUND THROUGH 2 x E-SONIC-10 / 10"-KOAXIAL-LOUDSPEAKER

TECHN. DATA:	POWERSTATION-200/WHITE	POWERSTATION-200/BLACK
Nominal Power:	2 x 100-watt	2 x 100-watt
Power-Consumption:	2 x 100V / 100-50-25W	2 x 100V / 100-50-25W
Frequency-Range:	50-20 000 Hz	50-20 000 Hz
SPL 1W/1m:	100 dB	100 dB
SPL NW/1m:	123 dB	123 dB
Dimensions:	625 (660) x 290 x 185 mm	625 (660) x 290 x 185 mm
Weight:	app. 13 kg	app. 13 kg
Colour:	white	black



PAGE-70

