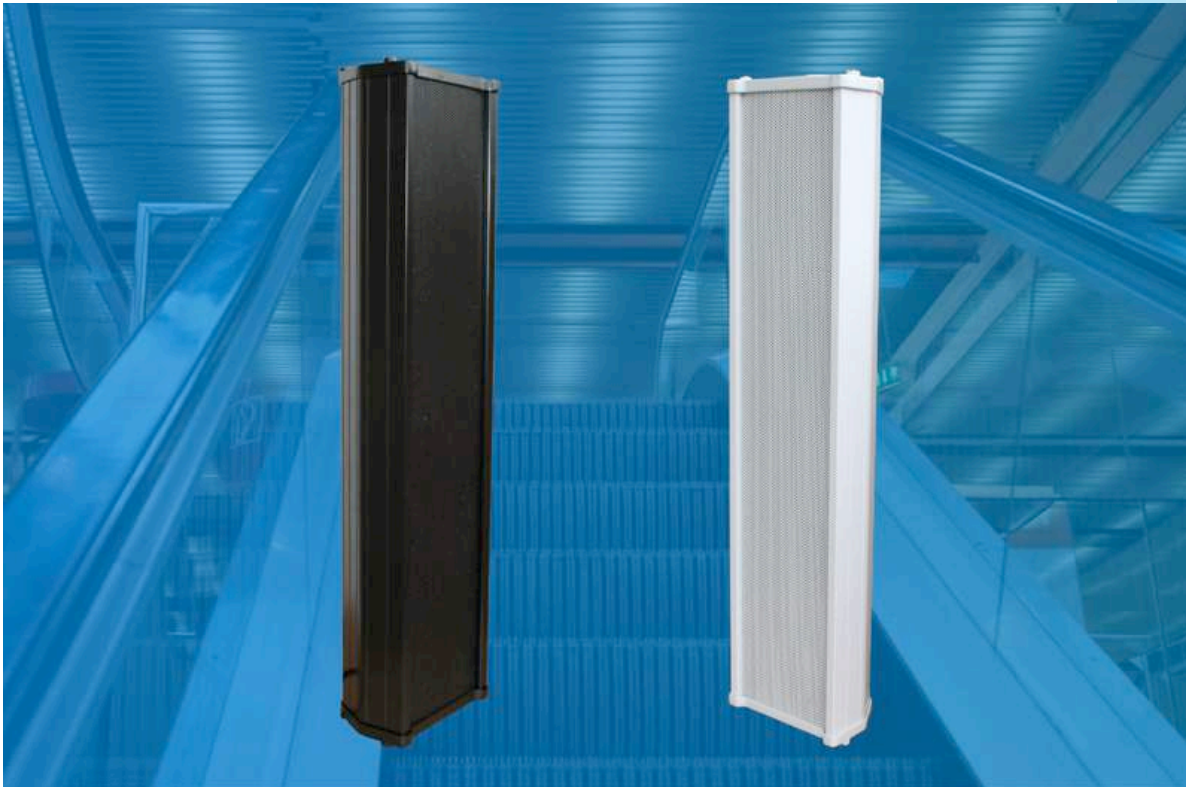


CS-50-WA IN DC UND A/B-VERSION FOR A/B-SYSTEM-LINES

CS
50
WA

A/B

DC



- **WEATHER-PROOF** THROUGH ALUMINIUM-CASING, **ALU-GRILL** & **ABS-INNER-PANEL**
- **DC-VERSION** WITH 2 x 4 DUAL-SYSTEM-COILS OVER THE **FULL FRONT**
- **AB-VERSION** WITH 2 x 2 SPEAKERS OVER A SPLITTED **FRONT**
- **V2A BRACKET** & **SCREWS**
- STEAM/DAMPNESS-PROTECTED & DUST-PROTECTED
- **BALL-ATTACK-PROTECTED**
- OPTIONAL CERAMIC-CONNECTING-CLAMP & THERMO-FUSE AVAILABLE
- **BALL-ATTACK-CERTIFICATED** VERSION ACC. TO **DIN 18032/III** OBTAINABLE

ALU

TECHN. DATA:

CS-50WA-DC

CS-50WA-AB

Nominal Power:	2 x 30 Watt with 2 x 4 Speaker	2 x 30 Watt with 2 x 2 Speaker
100-V-Taps:	2 x 100V-30-15-7,5 Watt	2 x 100V-30-15-7,5 Watt
FQ-Range:	70-18000 Hz	70-18000 Hz
SPL 1W/1m:	98 dB	98 dB
SPL NW/1m:	115 dB	115 dB
Dimensions:	615 x 150x 100 mm	615 x 150x 100 mm
Weight:	4,8 Kg	3,9 Kg
Colour:	white / black	white / black

WEATHER
PROOF

